

IKA®

Shakers



designed
to work perfectly

3D Shakers | World in motion!

For over a century, IKA® has been leading the way with innovative technologies and applications in the field of laboratory, analytical and process equipment.

In 1925, IKA® first produced the conventional shaker and displayed this entire product line at ACHEMA. To give our loyal customers a leading edge, IKA® has ensured that new product innovation has been introduced time and time again. And once again, IKA® has completely revamped its' shaker line by incorporating advanced technology with unique designs. As always, we continue our 100 year old tradition of bringing design, innovation, ease of use and commitment to our customers!

IKA® already has a line of well known and proven orbital and horizontal shakers. IKA® is proud to introduce a brand new series of Rollers, Rockers and Overhead Rotators. The wide range of Rocking, Rolling, Rotating and Shaking covers the entire spectrum of motions in mixing technology. All new devices are available in a basic and digital version. IKA® has also added a sibling to its' voluminous incubator shaker KS 4000 i control and ic control. The expanded product range facilitates the use of our equipment in a wider range of applications, especially in the medical and biological field. The hallmark of IKA®, exceptional design, innovation, quality, high efficiency, smooth operation and excellent performance continues as it has for 100 years!



3 Year warranty*

* 2+1 years after registering at www.ika.com/register, glassware and wearing parts excluded

Protection class according to DIN EN 60529: IP 21



2D & 3D Rockers | Enhanced dimensions, Smaller footprints!



Touch keypad for easy operation



Three-dimensional tumbling rocking/see-saw motion



C/T button for choosing the counter or the timer function



Two-dimensional rocking/see-saw motion



2+1 years after registering at www.ika.com/register



Timer display for accurate and reproducible conditions

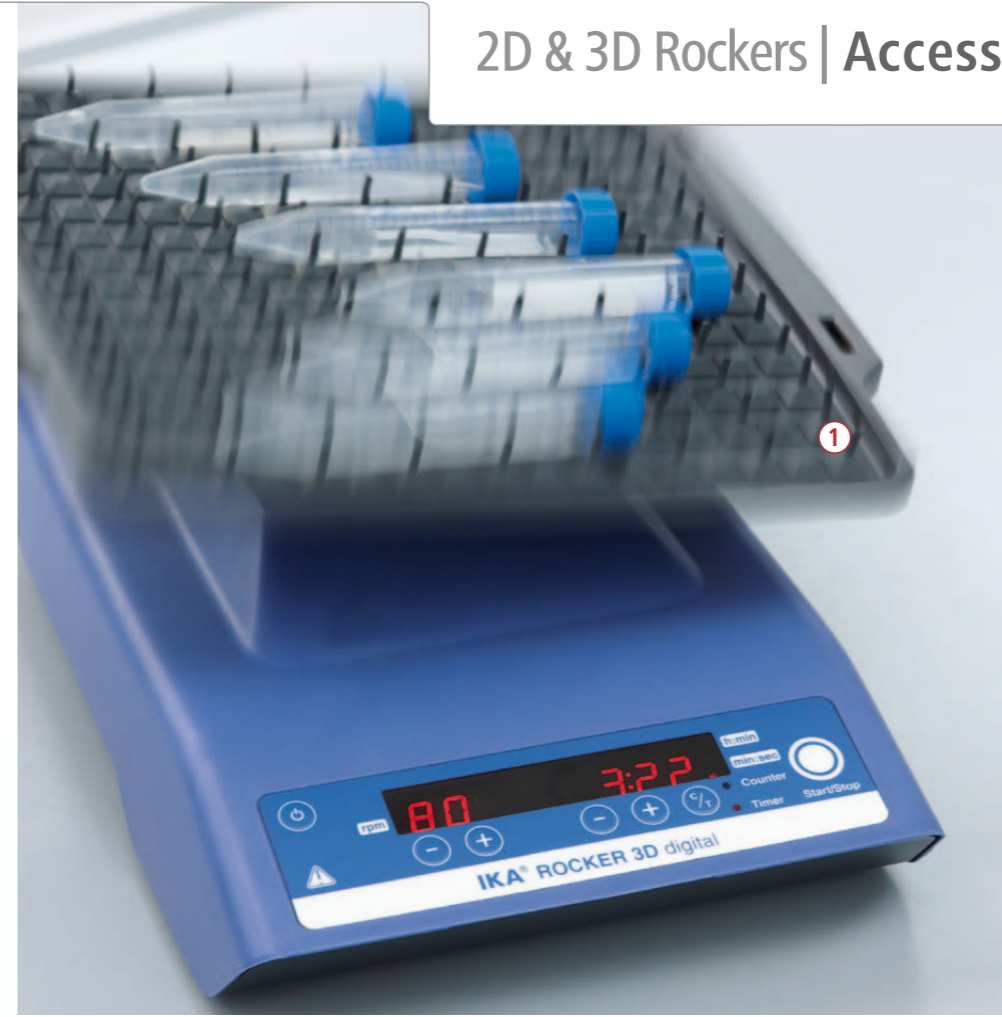


Dual platform option expands workspace

The brand new range of 2D and 3D Rockers provide gentle rocking/see-saw action and are used for homogenous mixing in flasks, culture flasks, Petri dishes and tubes. The compact, small footprint and dual platform saves valuable bench space and facilitates easy-handling. Even with load and voltage fluctuations, shaking speeds remain constant. Precision in speed (available in fixed and variable) and adjustable tilt angle allow for a variety of applications.



2D & 3D Rockers | Accessories



Universal mat

Ident. No. 4004900

① Burled mat

Ident. No. 4004100

TB 1 Tray

28 x for tubes 5 ml, Ø 12 mm

Ident. No. 4004500

TB 2 Tray

16 x for tubes 15 ml, Ø 16 mm "standard 15 ml tubes"

Ident. No. 4002700

TB 3 Tray

14 x for tubes 30 ml, Ø 25 mm "standard 30 ml tubes"

Ident. No. 4231200

TB 4 Tray

10 x for tubes 30 ml, Ø 28 mm "standard 50 ml tubes"

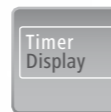
Ident. No. 4003500

IKA+

Special universal mat available to accommodate various kinds of vessels for maximum flexibility!

Rollers | Smart and safe mixing!

Rollers | Accessories



Timer display for accurate and reproducible conditions



C/T button for choosing the counter or the timer function



2+1 years after registering at www.ika.com/register



Touch keypad for easy operation



Gentle mixing applications demand smooth rocking and rolling action. Our 6 and 10 Rollers, operated at fixed and infinitely adjustable speed deliver this requirement efficiently. Easily removable attachments provide for quick cleaning in case of sample spills. Removable rollers allow for the use of larger tubes. Truly, a Rock n' Roll experience in the laboratory!



Rocking and Rolling action

IKA+

IKA+

Easy removable rollers allow for the use of larger tubes.

① SH Shield

Ident. No.
4013500



Loopster | Spin your Loop!

Loopster | Accessories

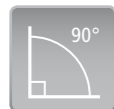


Timer Display

Timer display for accurate and reproducible conditions



Choice of tube holders to hold a number of different sized tubes



90 degree adjustable mixing angle



2+1 years after registering at www.ika.com/register



Touch keypad for easy operation



C/T button for choosing the counter or the timer function



Ident. No. 4002700

DS 1 Tube attachment

48 x 1.5 ml microcentrifuge tubes; Ø 10 mm



Ident. No. 4017500

DS 2 Tube attachment

24 x 5 ml tubes, Ø 12 mm



Ident. No. 4017600

DS 3 Tube attachment

20 x 15 ml centrifuge tubes, Ø 16 mm



Ident. No. 4017700

DS 4 Tube attachment

12 x 30 ml, Ø 25 mm



Ident. No. 4017800

DS 5 Tube attachment

12 x 50 ml centrifuge tubes, Ø 28 mm

Rotate your samples smoothly and effectively, at fixed or infinitely variable speeds with freely adjustable rotary angles. Ideal for biological samples, particularly blood samples and also suitable for separating and mixing of powdered and liquid samples in multiple tube sizes as large as 50 ml conical tubes. Easily removable attachments provide for quick cleaning in case of sample spills.

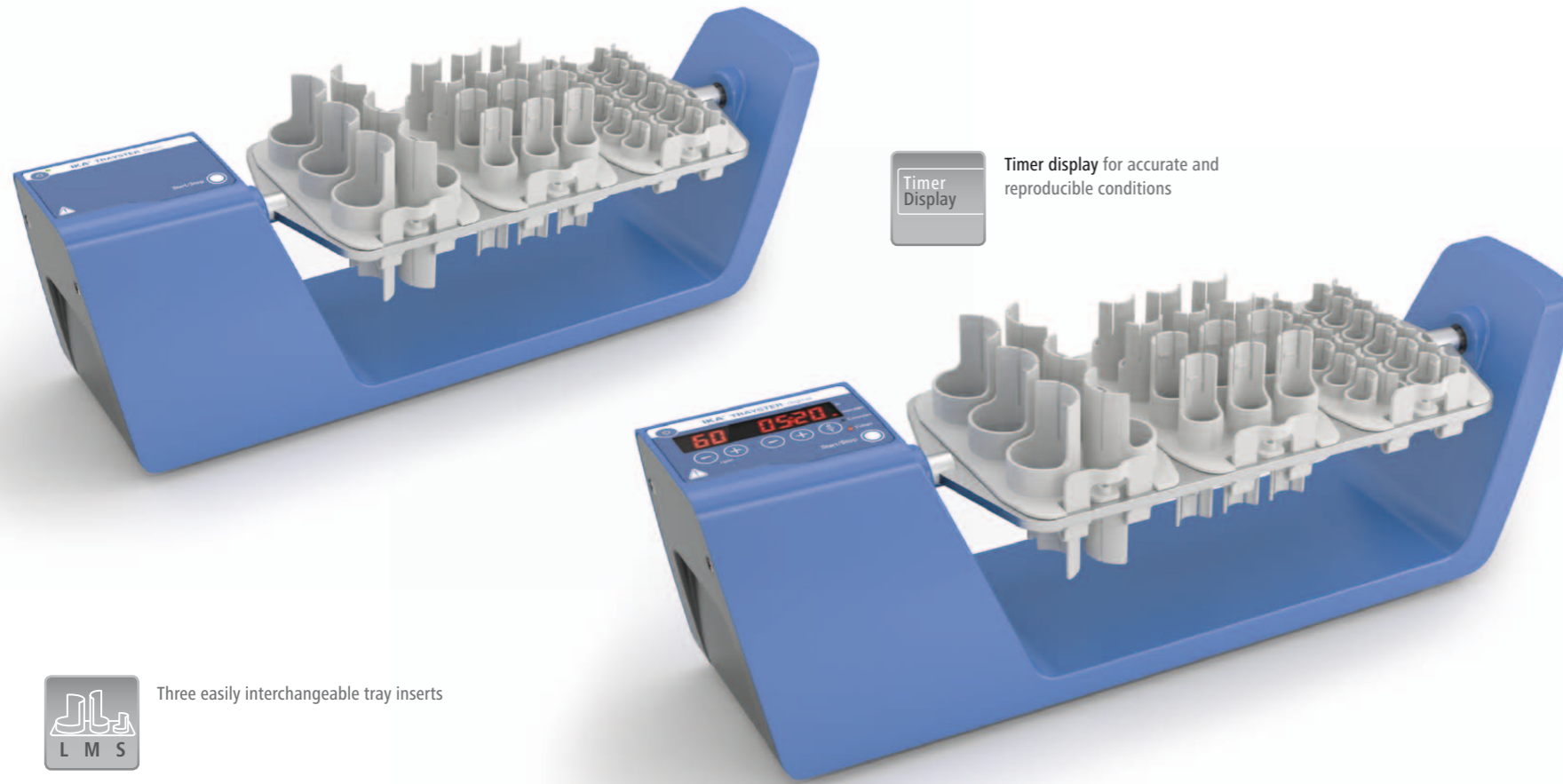


5-in-1 Tube attachment!

Single tube attachment for holding five different kinds of tubes for greater versatility.

IKA+

To get customized and additional accessories, please visit www.ika.com/service



Timer Display
Timer display for accurate and reproducible conditions

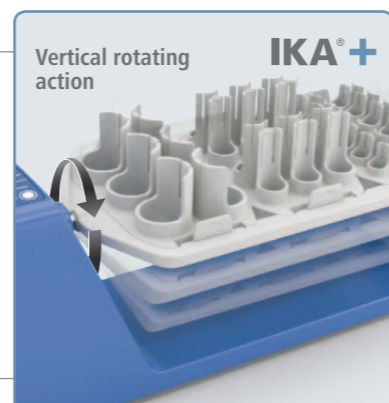
L M S
Three easily interchangeable tray inserts

Vertical rotating action

2+1
Year warranty*
2+1 years after registering at www.ika.com/register

Touch keypad for easy operation

C/T button for choosing the counter or the timer function



TR 1 Tube insert
24 x 1.5 ml microcentrifuge tubes; Ø 10 mm

Ident. No. 4006600



TR 2 Tube insert
24 x 5 ml tubes, Ø 12 mm

Ident. No. 4006700



TR 3 Tube insert
12 x 15 ml centrifuge tubes, Ø 16 mm

Ident. No. 4006800



TR 4 Tube insert
6 x 50 ml centrifuge tubes, Ø 28 mm

Ident. No. 4006900

Overhead shakers with vertical rotating action for smooth and effective mixing at fixed or infinitely adjustable speed. Ideal for biological samples, particularly blood and suitable for the separating and mixing of powdered and liquid samples in tubes of up to 50 ml. Easily removable attachments provide for quick cleaning in case of sample spills.



Incubator shakers | Shake with Control!

Accessories



Large LED display for speed, temperature and timer



Assure highly accurate temperature control



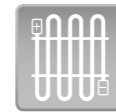
USB interface to control and document rheological changes and other parameters using labworldsoft® software and for updating your firmware



Wide range of attachments allows for using almost all shapes and sizes of vessels



2+1 years after registering at www.ika.com/register



Built-in cooling coil for connection to an external cooling unit (available only for KS 3000 ic control)



The KS 3000 series is the latest addition to the incubator shaker family. These sleek, compact, high-performance shakers are designed for safe, unattended operation in a temperature-controlled environment. Additionally, KS 3000 ic control is equipped with a built-in cooling coil for connection to an external cooling unit. Precise temperature control makes the incubator shaker a reliable asset in every lab, ensuring quiet, vibration-free and reliable operation - an excellent device for controlled mixing!



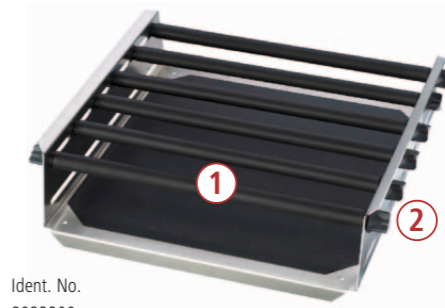
AS 4000.1	
Dimensions (W x D x H)	470 x 447 x 135 mm
Set-up plate	380 x 410 mm
Weight	3200 g

AS 1.401	
Length	417 mm

AS 4000.2	
Dimensions (W x D x H)	470 x 444 x 25 mm
Number of fixing clips (volume)	50 x AS 2.1 (25 ml) 48 x AS 2.2 (50 ml) 25 x AS 2.3 (100 ml) 16 x AS 2.4 (250 ml) 12 x AS 2.5 (500 ml) 7 x AS 2.6 (1000 ml)
Set-up plate	430 x 430 mm
Weight	2650 g

AS 4000.3	
Dimensions (W x D x H)	470 x 444 x 25 mm
Set-up plate	430 x 430 mm
Weight	800 g

AS 1.400	
Dimensions (W x D x H)	446 x 447 x 135 mm



Ident. No. 8022200

AS 3000.1 Universal attachment

For use with various types of vessels. Infinitely variable clamping rolls allow universal adaptation to the vessels.

Included with delivery:
1 x Basic holder, 6 x Clamping roll, 12 x Fastening screw



Ident. No. 3712000

AS 1.401 Clamping roll

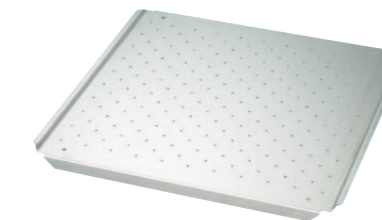
Spare for use with universal attachment AS 4000.1.



Ident. No. 3712300

AS 1.402 Fastening screw

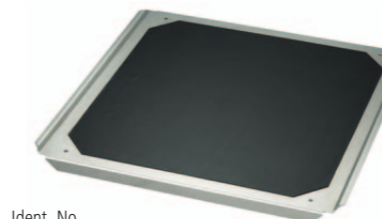
Spare for use with universal attachment AS 4000.1. Two AS 1.402 fastening screws are required for fastening a clamping roll onto the corresponding basic holder.



Ident. No. 3710100

AS 4000.2 Fixing clip attachment

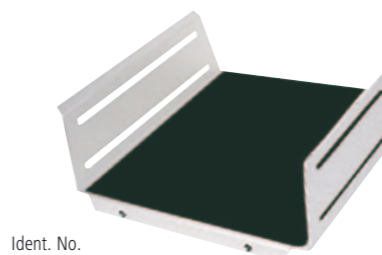
For shaking flasks, Erlenmeyer flasks and bottles with a round cross section (without fixing clips).



Ident. No. 3710000

AS 4000.3 Dish attachment

For smooth shaking operations in the low viscosity range, e.g. for cell cultures, nutrient media in Petri dishes, culture bottles and vessels with a low center of gravity. With integrated slip-resistant foil (PP).



Ident. No. 3710200

AS 1.400 Basic holder

Spare for use with universal attachment AS 4000.1

3D Shakers | Technical data



Available
Q1/2013

Rocker 2D basic | digital



Available
Q1/2013

Rocker 3D basic | digital



Available
Q2/2013

Loopster basic | digital

Technical data	
Type of movement	rocking
Shaking diameter	8° (angle) 0 – 15° (angle)
Permissible shaking weight (incl. attachment)	2 kg
Motor rating input / output	16 / 9 W
Permissible ON time	100%
Speed range	5 – 80 rpm 0 – 80 rpm
Speed display	7 segment LED
Timer	no ∞ / 1 s – 99.9 h
Timer display	none 7 segment LED
Operating mode	continuous operation timer and continuous operation
Dimensions (W x D x H)	280 x 330 x 150 mm
Weight	2.2 kg
Permissible ambient temp.	4 – 50 °C
Permissible relative moisture	80%
Protection class acc. to DIN EN 60529	IP 21
Interface	no
Voltage	100 – 240 V
Frequency	50/60 Hz
DC Voltage	24 V

Price **395,- EUR | 445,- EUR**

Rocker 2D basic: Ident. No. 4002000

Rocker 2D digital: Ident. No. 4003000

Rocker 3D basic: Ident. No. 4000000

Rocker 3D digital: Ident. No. 4001000

Loopster basic: Ident. No. 4015000

Loopster digital: Ident. No. 4016000

Technical data	
Type of movement	rotating
Shaking diameter	adjustable from horizontal to vertical
Permissible shaking weight (incl. attachment)	2 kg
Motor rating input / output	16 / 9 W
Permissible ON time	100%
Speed range	20 rpm (fixed) 0 – 80 rpm
Speed display	none 7 segment LED
Timer	no ∞ / 1 s – 99.9 h
Timer display	none 7 segment LED
Operating mode	continuous operation timer and continuous operation
Dimensions (W x D x H)	300 x 300 x 360 mm
Weight	3 kg
Permissible ambient temp.	4 – 50 °C
Permissible relative moisture	80%
Protection class acc. to DIN EN 60529	IP 21
Interface	no
Voltage	100 – 240 V
Frequency	50/60 Hz
DC Voltage	24 V

Price

359,- EUR | 495,- EUR

Trayster basic: Ident. No. 4005000

Trayster digital: Ident. No. 4006000



Available
Q2/2013

Trayster basic | digital



Available
Q1/2013

Roller 6 basic | digital



Available
Q1/2013

Roller 10 basic | digital

Type of movement	rocking and rolling
Shaking diameter	24.5 mm (high)
Permissible shaking weight	2 kg
Motor rating input / output	16 / 9 W
Permissible ON time	100%
Speed range	30 rpm (fixed) 0 – 80 rpm
Speed display	none 7 segment LED
Timer	no ∞ / 1 s – 99.9 h
Timer display	none 7 segment LED
Operating mode	continuous operation timer and continuous operation
Dimensions (W x D x H)	240 x 545 x 115
Weight	4 kg
Permissible ambient temp.	4 – 50 °C
Permissible relative moisture	80%
Protection class acc. to DIN EN 60529	IP 21
Interface	no
Voltage	100 – 240 V
Frequency	50/60 Hz
DC Voltage	24 V

Price **795,- EUR | 895,- EUR**

Roller 6 basic: Ident. No. 4010000

Roller 6 digital: Ident. No. 4011000

Roller 10 basic: Ident. No. 4012000

Roller 10 digital: Ident. No. 4013000

Incubator shakers | Technical data



Available
Q1/2013

KS 3000 i control | ic control



KS 4000 i control | ic control

Technical data	
Type of movement	orbital
Orbital diameter	20 mm
Permissible shaking weight (incl. attachment)	7.5 kg
Motor rating input / output	45 / 10 W
Power input	1120 W
Permissible ON time	100%
Speed range	10 – 500 rpm
Speed display	LED
Timer	yes
Timer display	LED
Time setting range	1 s – 999 h
Operating mode	timer and continuous operation
Heating temperature range	RT +5 – 80 °C RT -10 – 80 °C
Heat output	1000 W
Temperature display	LED
Temp. stability (0.2 l H ₂ O; RT 25°C, T = 37°C)	0.1 ±K
Temperature range (inlet T > 3°C)	– 12 – 80 °C
Dimensions (W x D x H)	465 x 695 x 430 mm
Weight	35 kg 37 kg
Permissible ambient temperature	15 – 32 °C
Permissible relative moisture	80%
Protection class acc. to DIN EN 60529	IP 30
Interface	RS 232, USB
USB interface	RS 232, USB
Voltage	230 V
Frequency	50/60 Hz

Price

3525,- EUR | 4325,- EUR

KS 3000 i control: Ident. No. 3940000

KS 3000 ic control: Ident. No. 3940100

4688,- EUR | 5643,- EUR

KS 4000 i control: Ident. No. 3510000

KS 4000 ic control: Ident. No. 3510100

Shakers | Technical data



MS 3 basic | digital



lab dancer



VORTEX Genius 3

Technical data	
Type of movement	orbital
Shaking diameter	4.5 mm
Permissible shaking weight (incl. attachment)	0.5 kg
Motor rating input / output	10 / 8 W
Permissible ON time	100%
Speed range	0 – 3000 rpm
Speed display	scale digital
Timer	no ∞ / 1 s – 999 min
Timer display	none digital
Operating mode	continuous / touch operation timer and continuous / touch operation
Dimensions (W x D x H)	148 x 205 x 63 mm
Weight	2.9 kg
Permissible ambient temp.	5 – 40 °C
Permissible relative moisture	80%
Protection class acc. to DIN EN 60529	IP 21
Interface	no
Voltage	100 – 240 V
Frequency	50/60 Hz
Price	405,- EUR 555,- EUR
	MS 3 basic: Ident. No. 3617000
	MS 3 digital: Ident. No. 3319000

Technical data	
Type of movement	orbital
Shaking diameter	4.5 mm
Permissible shaking weight (incl. attachment)	0.1 kg
Motor rating input / output	1.2 / 0.8 W
Permissible ON time	100%
Speed range	1000 – 2800 rpm
Speed display	none
Timer	no
Timer display	none
Operating mode	touch operation
Dimensions (W x D x H)	95 x 110 x 70 mm
Weight	0.55 kg
Permissible ambient temp.	5 – 40 °C
Permissible relative moisture	80%
Protection class acc. to DIN EN 60529	IP 40
Interface	no
Voltage	100 – 240 V
Frequency	50/60 Hz
Price	217,- EUR
	Ident. No. 4047700

Technical data	
Type of movement	orbital
Shaking diameter	4.5 mm
Permissible shaking weight (incl. attachment)	0.5 kg
Motor rating input / output	10 / 8 W
Permissible ON time	100%
Speed range	0 – 3000 rpm
Speed display	scale
Timer	no
Timer display	scale 7 segment LED
Operating mode	continuous / touch operation timer and continuous / touch operation
Dimensions (W x D x H)	176 x 190 x 63 mm
Weight	3 kg
Permissible ambient temp.	5 – 40 °C
Permissible relative moisture	80%
Protection class acc. to DIN EN 60529	IP 21
Interface	no
Voltage	100 – 240 V
Frequency	50/60 Hz
Price	295,- EUR 359,- EUR
	VORTEX 4 basic: Ident. No. 4049600
	VORTEX 4 digital: Ident. No. 4050100

Technical data	
Type of movement	orbital
Shaking diameter	4 mm
Permissible shaking weight (incl. attachment)	2 kg
Motor rating input / output	35 / 13.2 W
Permissible ON time	100%
Speed range	0 – 2200 rpm
Speed display	scale
Timer	no
Timer display	none
Operating mode	continuous operation
Dimensions (W x D x H)	157 x 247 x 130 mm
Weight	6.1 kg
Permissible ambient temp.	5 – 40 °C
Permissible relative moisture	80%
Protection class acc. to DIN EN 60529	IP 21
Interface	no
Voltage	230 V
Frequency	50/60 Hz
Price	1060,- EUR
	Ident. No. 2819000



MTS 2/4 digital Microtiter shaker



KS 130 basic | control



KS 260 basic | control

Technical data	
Type of movement	orbital
Shaking diameter	3 mm
Permissible shaking weight (incl. attachment)	2 or 4 microtiter plates
Motor rating input / output	35 / 13.2 W
Permissible ON time	100%
Speed range	0 – 1100 rpm
Speed display	scale
Timer	∞ / 1 – 99 min
Timer display	digital
Operating mode	timer and continuous operation
Dimensions (W x D x H)	185 x 320 x 105 mm
Weight	2.7 kg
Permissible ambient temp.	5 – 40 °C
Permissible relative moisture	80%
Protection class acc. to DIN EN 60529	IP 21
Interface	no
Voltage	230 V
Frequency	50/60 Hz
Price	1133,- EUR
	Ident. No. 3208000

Technical data	
Type of movement	orbital
Shaking diameter	4 mm
Permissible shaking weight (incl. attachment)	2 kg
Motor rating input / output	45 / 10 W
Permissible ON time	100%
Speed range	80 – 800 rpm
Speed display	LED line digital
Timer	∞ / 5 – 50 min ∞ / 0 – 9 h 59 min
Timer display	LED line digital
Operating mode	timer and continuous operation
Dimensions (W x D x H)	270 x 316 x 98 mm
Weight	8.8 kg
Permissible ambient temp.	5 – 50 °C
Permissible relative moisture	80%
Protection class acc. to DIN EN 60529	IP 21
Interface	no RS 232
Voltage	230 V
Frequency	50/60 Hz
Price	1111,- EUR 1671,- EUR
	KS 130 basic: Ident. No. 2980000
	KS 130 control: Ident. No. 2980100

Technical data	
Type of movement	orbital
Shaking diameter	10 mm
Permissible shaking weight (incl. attachment)	7.5 kg
Motor rating input / output	45 / 10 W
Permissible ON time	100%
Speed range	20 – 500 rpm 10 – 500 rpm
Speed display	LED line digital
Timer	∞ / 5 – 50 min ∞ / 0 – 9 h 59 min
Timer display	LED line digital
Operating mode	timer and continuous operation
Dimensions (W x D x H)	360 x 420 x 98 mm
Weight	8.5 kg 8.8 kg
Permissible ambient temp.	5 – 50 °C
Permissible relative moisture	80%
Protection class acc. to DIN EN 60529	IP 21
Interface	no RS 232
Voltage	230 V
Frequency	50/60 Hz
Price	1772,- EUR 2312,- EUR
	KS 260 basic: Ident. No. 2980200
	KS 260 control: Ident. No. 2980300

Shakers | Technical data

Shakers | Accessories



KS 501 digital



HS 260 basic | control



HS 501 digital

Technical data

KS 501 digital	HS 260 basic control	HS 501 digital
Type of movement	orbital	reciprocating
Shaking diameter	30 mm	20 mm
Permissible shaking weight (incl. attachment)	15 kg	7.5 kg
Motor rating input / output	70 / 19 W	45 / 10 W
Permissible ON time	100%	100%
Speed range	0 – 300 rpm	20 – 300 rpm 10 – 300 rpm
Speed display	digital	LED line digital
Timer	∞ / 1 – 56 min	∞ / 5 – 50 min ∞ / 0 – 9 h 59 min
Timer display	digital	LED line digital
Operating mode	timer and continuous operation	timer and continuous operation
Dimensions (W x D x H)	505 x 585 x 120 mm	360 x 420 x 100 mm
Weight	26 kg	8.5 kg 8.8 kg
Permissible ambient temp.	5 – 50 °C	5 – 50 °C
Permissible relative moisture	80%	80%
Protection class acc. to DIN EN 60529	IP 21	IP 21
Interface	no	no RS 232
Voltage	230 V	230 V
Frequency	50/60 Hz	50/60 Hz

Price **3467,- EUR**

Ident. No. 2526400

Price **1772,- EUR | 2312,- EUR**

HS 260 basic: Ident. No. 3066600
HS 260 control: Ident. No. 3066700

Price **3467,- EUR**

Ident. No. 2527000

AS 130.1	
Dimensions (W x D x H)	325 x 234 x 88 mm
Set-up plate	220 x 220 mm
Weight	850 g



Ident. No. 8017300

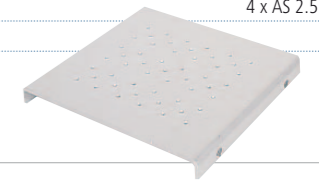
AS 130.1 Universal attachment

For use with various types of vessels by means of universal, infinitely variable clamping rolls.

Included with delivery:

1 x AS 1.30 Basic holder,
3 x AS 1.31 Clamping roll,
6 x AS 1.5 Fastening screw

AS 130.2	
Dimensions (W x D x H)	230 x 230 x 24 mm
Number of fixing clips (volume)	20 x AS 2.1 (25 ml) 12 x AS 2.2 (50 ml) 12 x AS 2.3 (100 ml) 4 x AS 2.4 (250 ml) 4 x AS 2.5 (500 ml)
Weight	650 g



Ident. No. 3115000

AS 130.2 Fixing clip attachment

For processing round flasks, measuring flasks and Erlenmeyer flasks. Please order fixing clips separately.

Accessories:

Fixing clips: AS 2.1, AS 2.2, AS 2.3, AS 2.4, AS 2.5

AS 130.3	
Dimensions (W x D x H)	420 x 270 x 32 mm
Set-up plate	220 x 340 mm
Weight	370 g

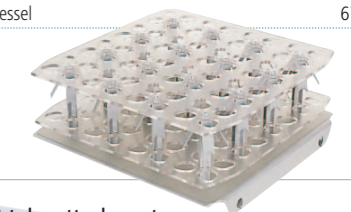


Ident. No. 3120000

AS 130.3 Dish attachment

For smooth shaking operations in the low viscosity range, e.g. Petri dishes or culture bottles. With integrated slip-resistant foil (PP).

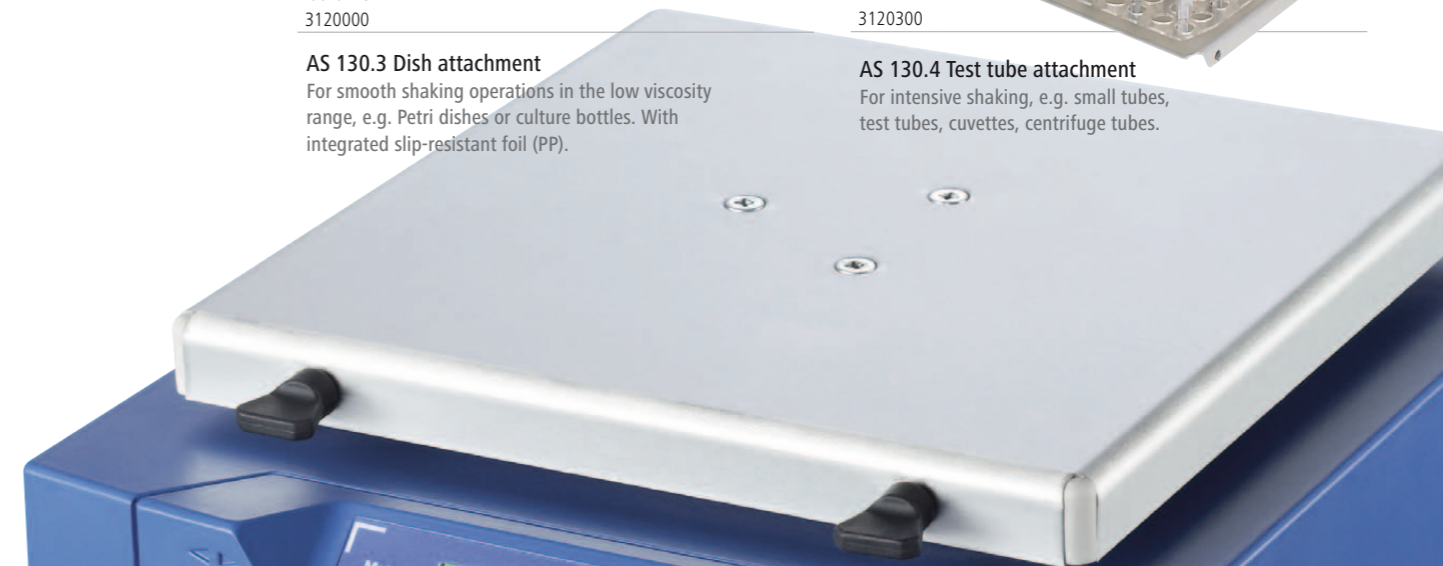
AS 130.4	
Dimensions (W x D x H)	220 x 230 x 95 mm
Capacity	64
Vessel Ø	10 – 16 mm
Min. height of vessel	80 mm
Min. height of vessel	670 g



Ident. No. 3120300

AS 130.4 Test tube attachment

For intensive shaking, e.g. small tubes, test tubes, cuvettes, centrifuge tubes.



Shakers | Accessories

VX 11.1	
Bore holes (number)	70
Hole Ø	10 mm



Ident. No.
3659000

VX 11.1 Test tube insert
Attachment for Eppendorf tubes or test tubes.

VX 11.3	
Bore holes (number)	32
Hole Ø	16 mm



Ident. No.
3659200

VX 11.3 Test tube insert
Attachment for test tubes.

VX 11.2	
Bore holes (number)	41
Hole Ø	12 mm



Ident. No.
3659100

VX 11.2 Test tube insert
Attachment for test tubes.

VX 11.4	
Bore holes (number)	18
Hole Ø	20 mm



Ident. No.
3659300

VX 11.4 Test tube insert
Attachment for test tubes.

VX 1	
Dimensions (W x D x H)	130 x 135 x 40 mm
Weight	160 g



Ident. No.
0607200

VX 1 One-hand attachment
For shaking single, non-fixed vessels of 1 – 250 ml.

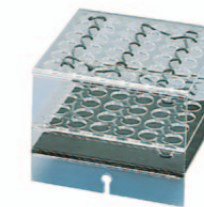
VX 7	
Dimensions (W x D x H)	410 x 210 x 40 mm
Weight	740 g



Ident. No.
0953300

VX 7 Dish attachment
For careful mixing of culture bottles, Petri dishes, etc.

VX 2	
Dimensions (W x D x H)	140 x 145 x 115 mm
Material	macrolon
Weight	300 g



Ident. No.
0568900

VX 2 Test tube attachment
For up to 36 test tubes or centrifugal tubes with a diameter of 16 mm.

VX 8	
Dimensions (W x D x H)	265 x 136 x 60 mm
Clamping range	25 – 135 mm
Min. height of vessel	80 mm
Weight	760 g



Ident. No.
0910400

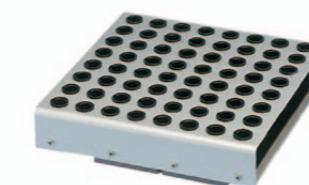
VX 8 Universal attachment
For rapid and secure clamping, e.g. 2 Erlenmeyer flasks up to 500 ml.

Ident. No.
3375400

VX 8.1 Clamping roll
Spare for use with VX 8 universal attachment.



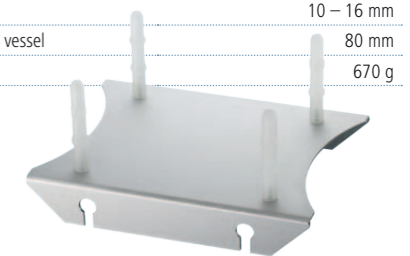
VX 2E	
Dimensions (W x D x H)	210 x 210 x 65 mm
Weight	790 g



Ident. No.
1618100

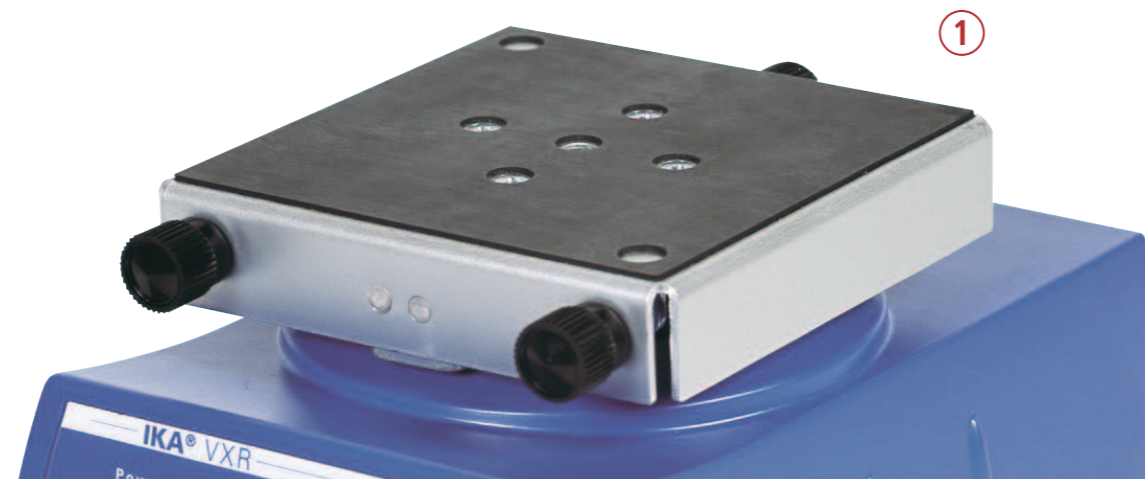
VX 2E "Eppendorf" attachment
For intensive mixing of up to 64 "microcentrifuge" tubes (1.5 ml).

VX 11	
Dimensions (W x D x H)	220 x 230 x 95 mm
Capacity	64
Vessel Ø	10 – 16 mm
Min. height of vessel	80 mm
Weight	670 g



Ident. No.
3627700

VX 11 Basic holder
Attachment for test tube inserts.

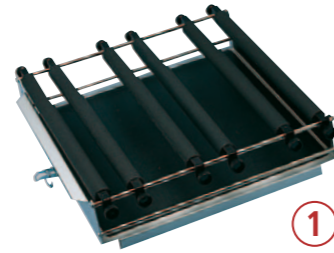


Shakers | Accessories

AS 501.1

Dimensions (W x D x H)	480 x 500 x 120 mm
Set-up plate	420 x 420 mm
Weight	4000 g

Ident. No.
8000200



1

AS 501.1 Universal attachment

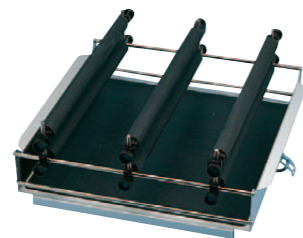
For various types of vessels with a minimum volume of 50 ml. Ideally more than 250 ml. The clamping rolls may be adjusted to two levels.

Included with delivery:
1 x AS 1.10 Basic holder, 6 x AS 1.11 Clamping roll, 12 x AS 1.6 Fastening screw

AS 501.2

Dimensions (W x D x H)	480 x 505 x 190 mm
Capacity:	12 x 50 ml
(number of separating funnels per volume, pear-shaped)	10 x 100 ml
	6 x 250 ml
Weight	4180 g

Ident. No.
8000300



AS 501.2 Separating funnel attachment

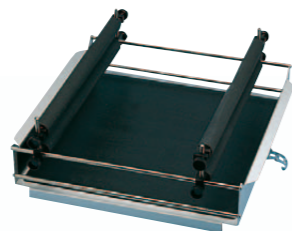
For shaking out, eluting, extracting, gassing out, dissolving, enriching, etc. Adjustment for the clamping rolls is infinitely variable, the set-up height can be changed by means of clamping devices.

Included with delivery:
1 x AS 1.10, 6 x AS 1.11, 6 x AS 1.6, 6 x AS 1.7

AS 501.3

Dimensions (W x D x H)	480 x 505 x 190 mm
Capacity:	4 x 500 ml
(number of separating funnels per volume, pear-shaped)	3 x 1000 ml
	2 x 2000 ml
Weight	3720 g

Ident. No.
8000400



AS 501.3 Separating funnel attachment

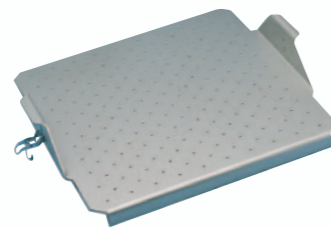
Same features as AS 501.2.

Included with delivery:
1 x AS 1.10, 4 x AS 1.11, 4 x AS 1.6, 4 x AS 1.7

AS 501.4

Dimensions (W x D x H)	475 x 460 x 95 mm
Number of fixing clips (volume)	110 x AS 2.1 (25 ml)
	55 x AS 2.2 (50 ml)
	35 x AS 2.3 (100 ml)
	16 x AS 2.4 (250 ml)
	12 x AS 2.5 (500 ml)
	8 x AS 2.6 (1000 ml)
Weight	2640 g

Ident. No.
2341100



AS 501.4 Fixing clip attachment

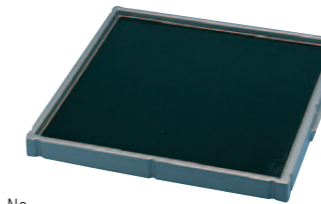
For shaking flasks, Erlenmeyer flasks and pear-shaped flasks (without fixing clips).

Accessories:
Fixing clips : AS 2.1, AS 2.2, AS 2.3, AS 2.4, AS 2.5

AS 501.5

Dimensions (W x D x H)	450 x 450 x 45 mm
Set-up plate	420 x 420 mm
Weight	1120 g

Ident. No.
2339600



AS 501.5 Dish attachment

For smoothly shaking dishes, but also for smooth mixing in vessels with a large, flat bottom (wide-necked Erlenmeyer flasks and beakers). A plastic foil with mild adhesive prevents the vessel from slipping.

AS 501.6

Dimensions (W x D x H)	480 x 505 x 225 mm
Capacity: (number of separating funnels per volume, pear-shaped)	4 x 1000 ml
Weight	5500 g

Ident. No.
8000500



AS 501.6 Separating funnel attachment

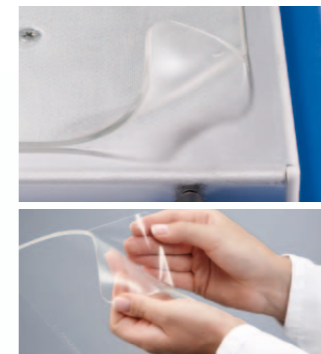
Same features as AS 501.2. This attachment will hold 4 x 1000 ml separating funnels.

Included with delivery:
1 x AS 1.10, 4 x AS 1.6, 4 x AS 1.12, 8 x AS 1.13

STICKMAX

Dimensions (W x D x H)	200 x 200 mm
Permissible ambient temperature	5 – 80 °C
Max. speed	300 rpm
Number of adhesive mats per shaker	KS 130 1 pcs.
	KS/HS 260 3 pcs.
	KS/HS 501 4 pcs.
	KS 4000 i 4 pcs.

Ident. No.
3920000



STICKMAX

New universal adhesive mat for the fixing clip attachments of KS 130, KS/HS 260, KS/HS 501 and KS 4000 i shakers.

- Ideal for frequently changing vessel types and sizes
- Self-adhesive
- Devices can be easily removed by side tilting movement
- Suitable for disinfection
- Peel-away strength required: 5 N/cm²



Shakers | Accessories

AS 260.1	
Dimensions (W x D x H)	425 x 335 x 135 mm
Set-up plate	320 x 320 mm
Weight	1600 g



Ident. No.
8017400

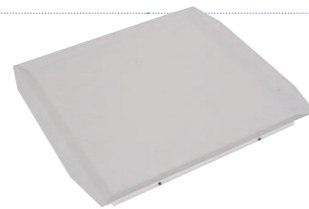
AS 260.1 Universal attachment

For various types of vessels. Infinitely variable clamping rolls allow universal adaptation to the vessels.

Included with delivery:

1 x AS 1.60 Basic holder,
4 x AS 1.61 Clamping roll,
8 x AS 1.5 Fastening screw

AS 260.3	
Dimensions (W x D x H)	410 x 370 x 32 mm
Set-up plate	320 x 320 mm
Weight	460 g



Ident. No.
3120600

AS 260.3 Dish attachment

For smooth movement for cell cultures, nutrient media in Petri dishes, culture bottles and vessels with a low center of gravity. With integrated slip-resistant foil (PP).

AS 260.2	
Dimensions (W x D x H)	330 x 330 x 24 mm
Number of fixing clips (volume)	56 x AS 2.1 (25 ml) 23 x AS 2.2 (50 ml) 23 x AS 2.3 (100 ml) 11 x AS 2.4 (250 ml) 9 x AS 2.5 (500 ml) 5 x AS 2.6 (1000 ml)
Weight	1290 g



Ident. No.
3115500

AS 260.2 Fixing clip attachment

For shaking flasks, Erlenmeyer flasks and bottles with a round cross-section (without fixing clips).

Accessories:

Fixing clips: AS 2.1, AS 2.2, AS 2.3, AS 2.4, AS 2.5

AS 260.5	
Dimensions (W x D x H)	334 x 425 x 145 mm
Capacity: (number of separating funnels per volume, pear-shaped)	6 x 50 ml 5 x 100 ml 3 x 250 ml 3 x 500 ml
Weight	1550 g

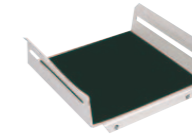


Ident. No.
3120900

AS 260.5 Separating funnel attachment

For shaking out, salting out, extracting, eluting and enriching. The 3 clamping rolls (included in delivery) are height-adjustable for adaption to different separating funnel sizes. The separating funnels are secured with O-rings (6 O-rings included).

AS 1.30	
Dimensions (W x D x H)	252 x 234 x 88 mm



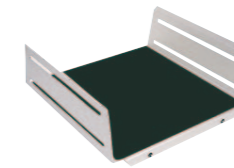
Ident. No.
3148000

AS 1.30 Basic holder

For use with universal attachment AS 130.1.

Accessories:
AS 1.31, AS 1.5

AS 1.60	
Dimensions (W x D x H)	348 x 335 x 135 mm



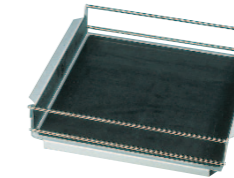
Ident. No.
3149000

AS 1.60 Basic holder

For use with universal attachment AS 260.1.

Accessories:
AS 1.61, AS 1.5

AS 1.10	
Dimensions (W x D x H)	480 x 480 x 120 mm



Ident. No.
2339700

AS 1.10 Basic holder

For use with universal attachment AS 501.1 and separating funnel attachments AS 501.2, AS 501.3 and AS 501.6.

Accessories:
AS 1.11, AS 1.6, AS 1.7, AS 1.8, AS 1.12, AS 1.13

AS 1.31	
For basic holder	AS 1.30
Length	228 mm

AS 1.61	
For basic holder	AS 1.60
Length	335 mm

AS 1.11	
For basic holder	AS 1.10
Length	410 mm

Clamping roll

AS 1.31
AS 1.61
AS 1.11



Ident. No.
3030500 AS 1.31
3030501 AS 1.61
2339800 AS 1.11



Shakers | Accessories



AS 1.5 Fastening screw

Fastening screw for the universal attachments AS 130.1, AS 260.1 and the separating funnel attachment AS 260.5. Two AS 1.5 fastening screws are required for fastening a clamping roll onto the corresponding basic holder.

Ident. No. 2979400



AS 1.7 Clamping device

Two AS 1.6 and two AS 1.7 clamping devices are required for fastening two clamping rolls one above the other (for clamping separating funnels). For basic holder AS 1.10 only.

Ident. No. 1269200



AS 1.6 Fastening screw

Two AS 1.6 clamping devices are required for fastening a clamping roll to the corresponding basic holder (for basic holder AS 1.10 only).

Ident. No. 1268400



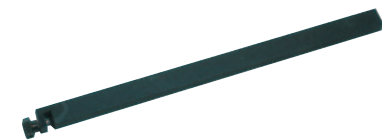
AS 1.8 Supporting clamping device

Two AS 1.6 clamping devices and two AS 1.8 supporting clamping devices are required if a clamping roll is to be attached at a higher position (e.g. for fixing a vessel which has a higher point of gravity). For basic holder AS 1.10 only.

Ident. No. 1268900

AS 1.12 Supporting bar

For attaching two AS 1.13 ground section holders for fixing 1000 ml separating funnels. For basic holder AS 1.10 only.
Accessories: AS 1.13



Ident. No. 2594500

Length 437 mm



AS 1.13 Ground section holder

For attaching separating funnels with ground opening NS 29 (2 x AS 1.13 necessary per separating funnel). For basic holder AS 1.10 only.

Ident. No. 2597000

For flask volume	AS 2.1	AS 2.2	AS 2.3	AS 2.4	AS 2.5	AS 2.6
	25 ml	50 ml	100 ml	200 ml / 250 ml	500 ml	1000 ml

Ident. No.	AS 2.1	AS 2.2	AS 2.3	AS 2.4	AS 2.5	AS 2.6
1	1234300	1234400	1234500	1234600	1234700	3819300

- 1 AS 2.1 Fixing clip
- 2 AS 2.2 Fixing clip
- 3 AS 2.3 Fixing clip
- 4 AS 2.4 Fixing clip
- 5 AS 2.5 Fixing clip
- 6 AS 2.6 Fixing clip



VG 3.31 Test tube attachment*

For 54 Eppendorf tubes (continuous operation).

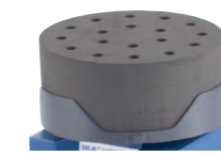
Ident. No. 3344300



VG 3.32 Test tube attachment*

For 18 reagent glasses, 10 mm (continuous operation).

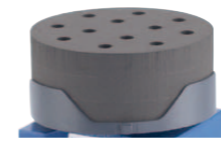
Ident. No. 3343900



VG 3.33 Test tube attachment*

For 12 reagent glasses, 12 mm (continuous operation).

Ident. No. 3344000



VG 3.1 Standard attachment

Standard attachment for reagent glasses / small vessels (continuous / touch operation), included with delivery.

Ident. No. 3341200



VG 3.2 One-hand attachment

One-hand attachment, 88 mm, round, with rubber insert (continuous / touch operation).

Ident. No. 3342300



VG 3.3 Universal attachment

Universal attachment, 150 mm, with rubber insert (continuous operation).

Ident. No. 3342400



VG 3.34 Test tube attachment*

For 8 reagent glasses, 16 mm (continuous operation).

Ident. No. 3344100



VG 3.35 Test tube attachment*

For 8 reagent glasses, 20 mm (continuous operation).

Ident. No. 3344200



VG 3.36 Erlenmeyer flask attachment*

For 1 Erlenmeyer / round flask from 100 to 250 ml (continuous operation).

Ident. No. 3342100



VG 3.37 Microtiter plate attachment*

For 1 standard microtiter plate (continuous operation).

Ident. No. 3344400



MS 3.1 Standard attachment

For test tubes and small vessels up to Ø 50 mm, included with the minishakers MS 3 basic and MS 3 digital.

Ident. No. 3426300



MS 3.3 Universal attachment

For various foam inserts, included with the minishakers MS 3 basic and MS 3 digital.

Ident. No. 3426600



MS 3.4 Microtiter plate attachment

For use with a microtiter plate, included with the minishaker MS 3 digital.

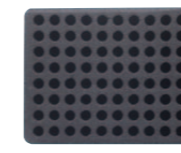
Ident. No. 3426400



MS 3.5 PCR plate attachment

For holding PCR plates, 96-well.

Ident. No. 3428000



MS 1.21 One-hand insert

For inserting into the universal attachment, included with the minishakers MS 3 basic and MS 3 digital.

Ident. No. L001540



MS 1.31 Test tube insert

For inserting into universal attachment, for 14 test tubes Ø 10 mm, material: ethylvinyl-acetate.

Ident. No. L001840



MS 1.32 Test tube insert

For inserting into the universal attachment, for 6 test tubes Ø 12 mm. Material: ethylvinyl-acetate. Included with the minishakers MS 3 digital.

Ident. No. L001850



MS 1.33 Test tube insert

For inserting into the universal attachment, for 4 test tubes Ø 16 mm. Material: ethylvinyl-acetate.

Ident. No. L001860



MS 1.34 Test tube insert

For inserting into the universal attachment, for any number of bore holes. Material: ethylvinyl-acetate.

Ident. No. L001830



* For VG 3.3 Universal attachment



Erlenmeyer Flasks										
IKA® Shaker	Attachment Combination	25 ml	50 ml	100 ml	250 ml	500 ml	1000 ml	2000 ml	3000 ml	5000 ml
KS 130	Stickmax	23	15	6	5	4	1	1**		0
KS 130	AS 130.1	15	12	6	2	2	1	1**		0
KS 130	required clamping rolls	4	4	3	2	2	2	2		0
KS 130	AS 130.2 Fixing Clip Attachment	12	12	8	4	4	1	0		0
KS 260	Stickmax	25	16	9	10	9	5	2		1
KS 260	AS 260.1	21	18	15	8	6	3	1		1
KS 260	required clamping rolls	4	4	4	4	4	3	2		2 (4)
KS 260	AS 260.2 Fixing Clip Attachment	31	28	16	10	8	5	4		0
KS 501	Stickmax	25	16	9	25	16	9	5	1	1
KS 501	AS 501.1	50	40	30	16	12	9	4	4	1
KS 501	required clamping rolls	6	6	6	5	4	6	3	3	2
KS 501	AS 501.4 Fixing Clip Attachment	50	35	30	16	12	8	5	0	0
KS 4000 i	Stickmax	25	16	9	29	16	9	4	1	0
KS 4000 i	AS 4000.1	45	40	30	16	9	8	4	2	0
KS 4000 i	required clamping rolls	6	6	6	8	4	4	4	2	0
KS 4000 i	AS 4000.2 Fixing Clip Attachment	55	38	25	16	11	7	4	0	0



Volumetric Flasks										
IKA® Shaker	Attachment Combination	25 ml	50 ml	100 ml	200 ml	250 ml	500 ml	1000 ml	2000 ml	
KS 130	Stickmax	25	16	9	5	5	2	1**	**	
KS 130	AS 130.1	16	12	6	3	2	2	0	0	
KS 130	required clamping rolls for AS 130.1	5	4	3	3	2	2	0	0	
KS 130	AS 130.2	15	8	8	4	4	4	1	0	
KS 260	Stickmax	49	36	25	10	10	9	4	**	
KS 260	AS 260.1 max. quantity	32	24	20	12	16	6	2	**	
KS 260	required clamping rolls for AS 230.1	5	5	7	6	6	4	2	**	
KS 260	AS 260.2	30	29	23	9	9	8	4	3	
KS 501	Stickmax	100	64	36	20	16	9	20	**	
KS 501	AS 501.1 + 10 AS 1.11 Clamping Roll + 20 AS 1.6 Fastening Screw	70	56	30	25	20	12	6	**	
KS 501	required clamping rolls for AS 501.1	8	14	10	6	5	6	4	**	
KS 501	AS 501.2	55	50	35	20	20	11	8	5	
KS 4000	Stickmax	100	64	36	20	20	16	6*	0	
KS 4000	AS 4000.1	70	40	24	20	20	12	6	0	
KS 4000	required clamping rolls for AS 4000.1	8	6	5	8	8	6	4	0	
KS 4000	AS 4000.2	52	49	30	19	19	11	6	0	



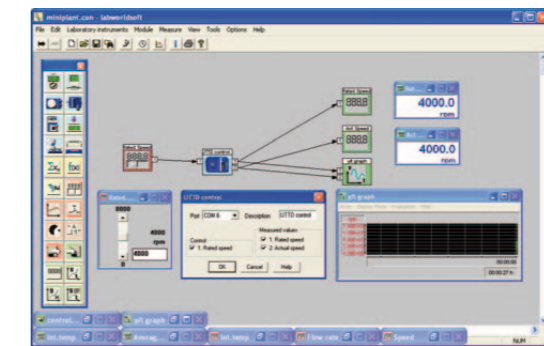
Beakers (high form)												
IKA® Shaker	Attachment Combination	25 ml	50 ml	100 ml	150 ml	250 ml	400 ml	600 ml	800 ml	1000 ml	2000 ml	3000 ml
KS 130	Stickmax	25	16	9	9	9	5	4	4	4*	1*	1*
KS 130	AS 130.1 max. quantity	18	15	8	6	6	3	2	2	2	1*	1*
KS 130	required clamping rolls for AS 130.1	4	3	3	3	2	2	2	2	2	2	2
KS 260	Stickmax	64	36	25	25	16	9	9	9	9	4*	4*
KS 260	AS 130.1 max. quantity	45	28	18	15	15	8	6	6	6	2	2
KS 260	required clamping rolls for AS 130.1	6	5	4	4	4	3	3	3	3	2	2
KS 501	Stickmax	121	81	49	36	36	25	16	16	9	9	4
KS 501	AS 130.1 max. quantity	96	90	40	35	24	20	12	12	12	12	4
KS 501	required clamping rolls for AS 130.1	9	8	5	5	5	4	4	4	4	3	4
KS 4000	Stickmax	121	81	49	36	36	25	16	16	9	9	4
KS 4000	AS 130.1 max. quantity	77	48	35	30	24	20	12	12	12	6	4
KS 4000	required clamping rolls for AS 130.1	8	7	6	5	5	4	4	4	4	3	3

* Limited recommendation! ** Not recommended!

Beakers (low form)														
IKA® Shaker	Attachment Combination	25 ml	50 ml	100 ml	150 ml	250 ml	400 ml	600 ml	800 ml	1000 ml	2000 ml	3000 ml	5000 ml	10000 ml
KS 130	Stickmax	25	16	9	9	5	4	4	4	2	1	1*	1*	**
KS 130	AS 130.1 max. quantity	15	8	8	8	4	2	2	2	2	2	1*	0	**
KS 130	required clamping rolls for AS 130.1	4	3	3	3	3	2	2	2	2	2	2		
KS 260	Stickmax	64	36	25	16	10	9	9	6	6	4	2	1	1*
KS 260	AS 260.1 max. quantity	32	24	15	12	8	6	6	6	2	2	2	1	1*
KS 260	required clamping rolls for AS 230.1	5	5	4	4	3	3	3	3	2	2	2	2	2
KS 501	Stickmax	100	64	49	36	25	16	16	10	9	9	4	4	1
KS 501	AS 501.1 max. quantity	70	48	42	30	20	16	12	9	9	6	4	1	1
KS 501	required clamping rolls for AS 501.1	8	7	6	5	4	4	3	3	3	3	3	2	2
KS 4000	Stickmax	100	64	49	36	25	16	16	10	9	9	4	4	1*
KS 4000	AS 4000.1 max. quantity	70	48	30	20	20	12	12	9	6	4	4	2	1*
KS 4000	required clamping rolls for AS 4000.1	8	7	6	5	5	4	4	4	3	3	3	2	2

* Limited recommendation! ** Not recommended!

labworldsoft®



IKA® laboratory software labworldsoft® is an advanced software for all your laboratory needs. With the help of this software, you can network up to 64 laboratory devices via one PC. All test parameters can be documented ensuring complete automation of your laboratory experiments. Measurements and processes may be run independently. Long waits and processing times are reduced, which increases productivity.



Comprehensive Worldwide Service!



Our dedicated team of engineers provides comprehensive worldwide technical service. Please feel free to contact your dealers or IKA® directly in case of any service queries. Hotline: In the event of an equipment malfunction or technical questions regarding devices and spare parts: call 00 8000 4524357 (008000 IKAHELP)



Integrated Safety



With customer safety as a priority, all IKA® shakers adhere to the requirements set forth by the norms DIN EN IEC 61010-1. They meet and exceed CE standards and fulfill international safety regulations.



Knowledge | Select your ideal shaker

Type of motion	Description	Diagram	Shaking diameter	Max. Permissible shaking weight	Speed range	Recommended IKA® device	Applications
Vortex	The cup generates a 'whirlpool' vortex action		4.5 mm	0.5 kg	0 – 3000 rpm	MS 3 basic	Suitable for shaking small vessels and microtiter plates
			4.5 mm	0.5 kg	0 – 3000 rpm	MS 3 digital	
			4.5 mm	max. 50 ml (1 test tube)	2800 rpm (fixed)	lab dancer	
			4.5 mm	0.1 kg	1000 – 2800 rpm	VORTEX 1	
			4 mm	0.4 kg	500 – 2500 rpm	VORTEX Genius 3	
			4.5 mm	0.5 kg	0 – 3000 rpm	VORTEX 4 basic	
			4.5 mm	0.5 kg	0 – 3000 rpm	VORTEX 4 digital	
Orbital	The platform moves in a circular orbit		20 mm	20 kg	10 – 500 rpm	KS 4000 i control	Ideal for unattended operation in a temperature-controlled environment
			20 mm	20 kg	10 – 500 rpm	KS 4000 ic control	
			20 mm	7.5 kg	10 – 500 rpm	KS 3000 i control	
			20 mm	7.5 kg	10 – 500 rpm	KS 3000 ic control	
			4 mm	2 kg	0 – 2200 rpm	VXR basic Vibrax®	
			3 mm	2 or 4 microtiter plates	0 – 1100 rpm	MTS 2/4 digital microtiter shaker	
			4 mm	2 kg	80 – 800 rpm	KS 130 basic	
			4 mm	2 kg	80 – 800 rpm	KS 130 control	
			10 mm	7.5 kg	20 – 500 rpm	KS 260 basic	
			10 mm	7.5 kg	10 – 500 rpm	KS 260 control	
			30 mm	15 kg	0 – 300 rpm	KS 501 digital	
Reciprocating	The platform moves back and forth horizontally		20 mm	7.5 kg	20 – 300 rpm	HS 260 basic	Ideal for shaking out, eluting, extracting, gassing out, dissolving, enriching, etc.
			20 mm	7.5 kg	10 – 300 rpm	HS 260 control	
			30 mm	15 kg	0 – 300 rpm	HS 501 digital	
Rocking (See-saw action)	The platform rocks on a central pivot		8° (angle)	2 kg	5 – 80 rpm	Rocker 2D basic	Used for homogenous mixing in flasks, culture flasks, Petri dishes and tubes
			0 – 15° (angle)	2 kg	0 – 80 rpm	Rocker 2D digital	
Rocking (3D Tumbling motion)	The platform moves in a three-dimensional motion		8° (angle)	2 kg	30 rpm (fixed)	Rocker 3D basic	Ideal for low foaming agitation, DNA extractions, staining and de-staining procedures, etc.
			0 – 15° (angle)	2 kg	0 – 80 rpm	Rocker 3D digital	
Rocking and Rolling	The platform rocks on a central pivot as well as revolves around a fixed point		24.5 mm (high)	2 kg	30 rpm (fixed)	Roller 6 basic	Recommended for mixing blood samples, viscous substances and liquid-solid suspensions where minimum aeration is required
			24.5 mm (high)	2 kg	0 – 80 rpm	Roller 6 digital	
			24.5 mm (high)	2 kg	30 rpm (fixed)	Roller 10 basic	
			24.5 mm (high)	2 kg	0 – 80 rpm	Roller 10 digital	
Rotating	Platform revolves at a tilted angle		adjustable from horizontal to vertical	2 kg	20 rpm (fixed)	Loopster basic	Ideal for keeping biological samples in suspension and for general mixing applications
			adjustable from horizontal to vertical	2 kg	0 – 80 rpm	Loopster digital	
			vertical or horizontal	2 kg	20 rpm (fixed)	Trayster basic	
			vertical or horizontal	2 kg	0 – 80 rpm	Trayster digital	



IKA®+

Ordering made easy!

For more information about our products and to place your order, please visit:

www.ika.com

201206_shakers_brochure_EN

Shakers | FAQ

Is it possible to operate using IKA® laboratory software?

labworldsoft® is an advanced software for all your laboratory needs. With the help of this software, you can network up to 64 laboratory devices via one PC. All test parameters can be documented ensuring complete automation of your laboratory experiments. Measurements and processes may be run independently. Long waits and processing times are reduced, which increases productivity.

Can I place my shaker in a CO₂ chamber or in an incubator?

If the relative humidity does not exceed 80% and the temperature stays within 5 – 40 °C (partially until 50°C), the shaker can be used in a CO₂ chamber or an incubator.

Which IKA® shaker of the HS/KS series starts automatically after a power failure?

KS 130, KS 260, KS 3000 and KS 4000 start automatically in certain modes (C, C+B) after a power failure.

What kind of vortex shakers does IKA® offer?

(They should have a touch function, but also come equipped with various attachments, e.g. for microtiter plates) The Lab Dancer, MS 3 basic, digital VORTEX 4 and VORTEX Genius 3 are the appropriate devices. MS 3 basic, digital and VORTEX Genius 3 have a variety of attachments for most variable shaking tasks.

Is it possible to shake deepwell plates with the MTS 2/4?

No, deepwell plates cannot be fixed properly; their center of gravity is simply too high.

IKA®-Werke GmbH & Co. KG
Janke & Kunkel-Str. 10
79219 Staufen
Germany

Tel. +49 7633 831-0
Fax +49 7633 831-98

sales@ika.de
www.ika.com