

IKA®

Shakers



designed
to work perfectly

21st century, IKA® has been leading with innovative technologies and solutions in the field of laboratory, and process equipment.

IKA® first produced the conventional shaker and this entire product line at ACHEMA. Today, loyal customers a leading edge, IKA® that new product innovation has been a constant over time and time again. And once again, IKA® completely revamped its' shaker line by bringing advanced technology with unique motions. Always, we continue our 100 year old tradition of bringing design, innovation, ease of use and reliability to our customers!

IKA® has a line of well known and proven horizontal shakers. IKA® is proud to introduce our brand new series of Rollers, Rockers and Rotators. The wide range of Rocking, Rolling and Shaking covers the entire spectrum of motions in mixing technology. All new motions available in a basic and digital version. IKA® also added a sibling to its' voluminous line, the IKA® KS 4000 i control and ic control. This new product range facilitates the use of IKA® shakers in a wider range of applications, from the medical and biological field. The exceptional design, innovation, efficiency, smooth operation and excellent reliability continues as it has for 100 years!

Year warranty*

*After registering at www.ika.com/register. Glassware and consumables are excluded.



Universal mat

Ident. No.
4004900

1 Burled mat

Ident. No.
4004100

TB 1 Tray

28 x for tubes 5

Ident. No.
4004500

TB 2 Tray

16 x for tubes 15 ml
"standard 15 ml"

Ident. No.
4002700

TB 3 Tray

14 x for tubes 30 ml
"standard 30 ml"

Ident. No.
4231200

TB 4 Tray

10 x for tubes 30 ml
"standard 50 ml"



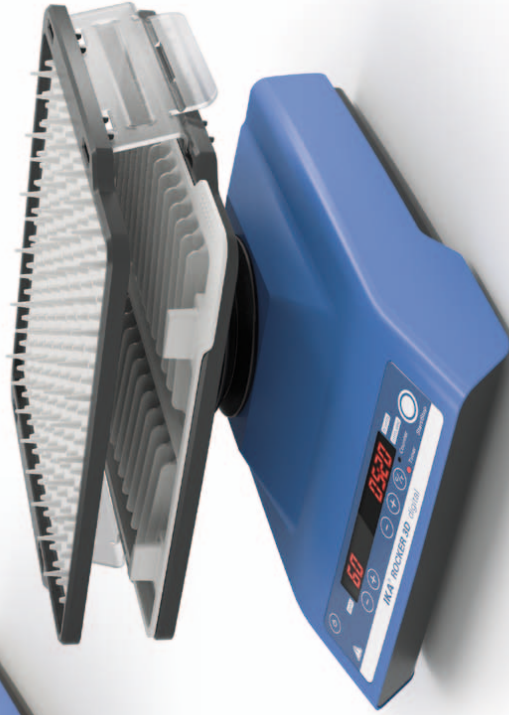
Touch keypad for easy operation



Three-dimensional tumbling rocking/see-saw motion



CT button for choosing the counter or the timer function



dimensional
g/see-saw motion

ears after registering at
ika.com/register

display for accurate and
licable conditions

Dual platform option expands
workspace



Rocking action



IKA+



ew range of 2D and 3D Rockers provide gentle rocking/
on and are used for homogenous mixing in flasks, culture
dishes and tubes. The compact, small footprint and dual
es valuable bench space and facilitates easy-handling. Even
id voltage fluctuations, shaking speeds remain constant.



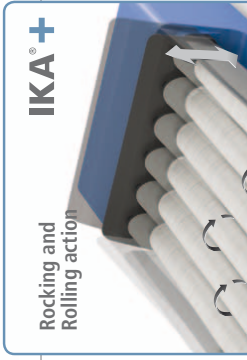
IKA⁺
 Easy removable rollers allow for the use of larger tubes.

1 SH Shield



Timer display for accurate and reproducible conditions

C/T button for choosing the counter or the timer function



IKA⁺
 Rocking and Rolling action

...ears after registering at
ika.com/register

keypad for easy operation

g applications demand smooth rocking and rolling action. O Rollers, operated at fixed and infinitely adjustable speed requirement efficiently. Easily removable attachments provide aning in case of sample spills. Removable rollers allow for rger tubes. Truly, a Rock n' Roll experience in the laboratory!

Timer display for accurate and reproducible conditions

Timer Display



Free adjustable number of different tubes

Free adjustable angle

Starts after registering at ika.com/register

Touch keypad for easy operation



CT button for choosing the counter or the timer function



Rotating action



IKA+

Centrifuge samples smoothly and effectively, at fixed or infinitely adjustable angles with freely adjustable rotary angles. Ideal for biological samples, particularly blood samples and also suitable for separating and centrifuging powdered and liquid samples in multiple tube sizes as large as 50 ml. Specialized rotors provide for quick and easy removal of tubes. Easily removable attachments provide for quick



DS 1 Tube attachment
48 x 1.5 ml microcentrifuge tubes

Ident. No.
4002700



DS 2 Tube attachment
24 x 5 ml tubes, Ø 12 mm

Ident. No.
4017500



DS 3 Tube attachment
20 x 15 ml centrifuge tubes

Ident. No.
4017600



DS 4 Tube attachment
12 x 30 ml, Ø 25 mm

Ident. No.
4017700

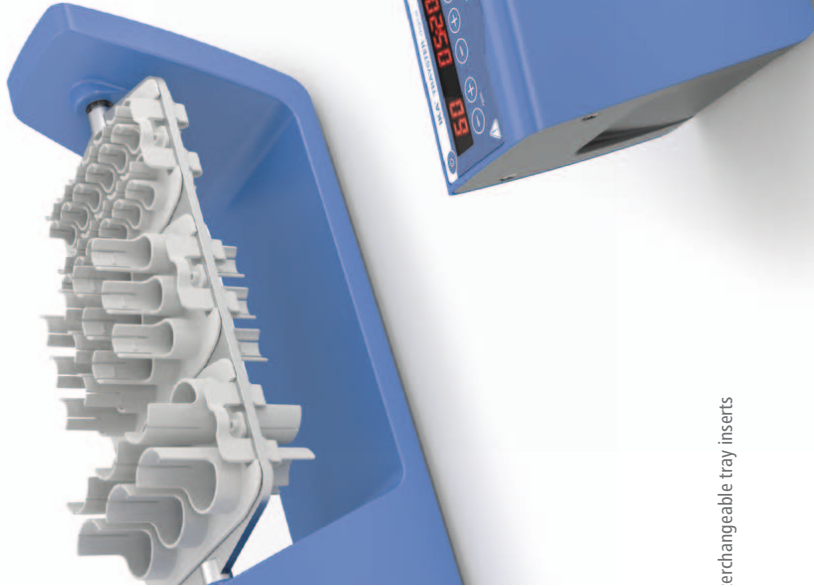


DS 5 Tube attachment
12 x 50 ml centrifuge tubes

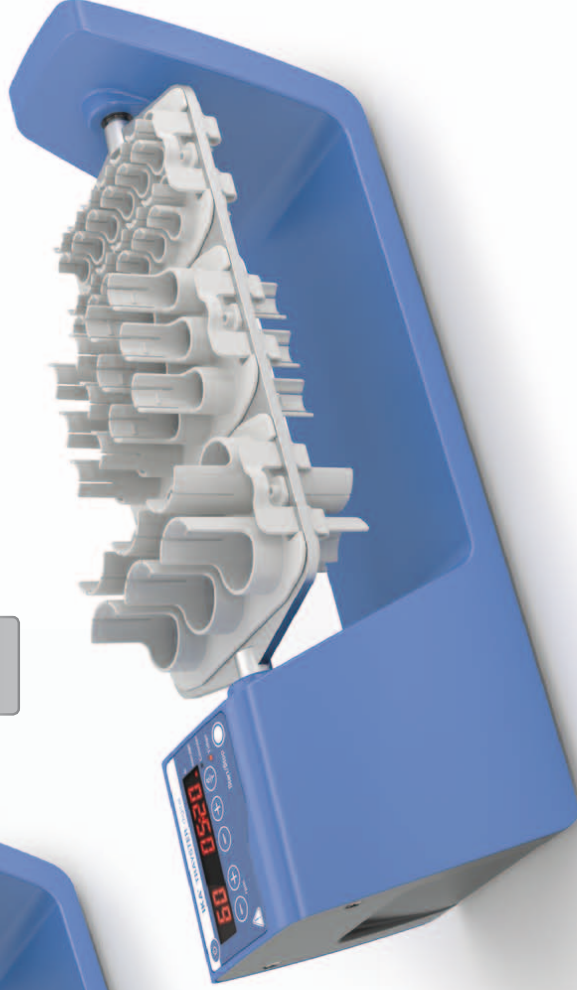
Ident. No.
4017800

5-in-1 Tube attachment!

Single tube attachment for holding five different kinds of tubes for greater



Timer display for accurate and reproducible conditions



Touch keypad for easy operation



C/T button for choosing the counter or the timer function



Vertical rotating action

IKA+

TR 1 Tube insert
24 x 1.5 ml microfuge tubes, Ø 16 mm



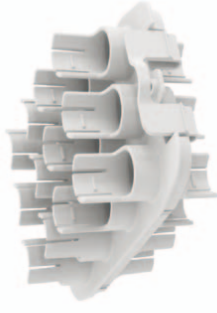
Ident. No.
4006600

TR 2 Tube insert
24 x 5 ml tubes, Ø 16 mm



Ident. No.
4006700

TR 3 Tube insert
12 x 15 ml centrifuge tubes, Ø 16 mm



Ident. No.
4006800

TR 4 Tube insert
6 x 50 ml centrifuge tubes, Ø 16 mm



Ident. No.
4006900

Interchangeable tray inserts

Vertical rotating action

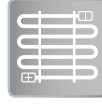
Touch keypad for easy operation

Centrifuge rotors with vertical rotating action for smooth and effective mixing of sedimented or infinitely adjustable speed. Ideal for biological samples, particularly blood and suitable for the separating and mixing of solid and liquid samples in tubes of up to 50 ml. Easily removable and provides for quick cleaning in case of sample spills.



2+1 years after registering at
www.ika.com/register

LED display for speed, temperature
and timer



Built-in cooling coil for connection to
an external cooling unit
(available only for KS 3000 ic control)

Highly accurate temperature

Large touch interface to control and document
operational changes and other parameters
using IKA's abworldsoft® software and for
integrating your firmware

Wide range of attachments allows for
shaking almost all shapes and sizes of



Orbital action

IKA+



The KS 3000 ic series is the latest addition to the incubator shaker family. These compact, high-performance shakers are designed for reliable, long-term operation in a temperature-controlled environment. The KS 3000 ic control is equipped with a built-in cooling coil for connection to an external cooling unit. Precise temperature control is ensured by the incubator shaker's reliable asset in every lab, ensuring quiet,

AS 4000.1

Dimensions (W x D x H) 470 x 447 x 135 mm
Set-up plate 380 x 410 mm
Weight 3200 g

AS 3000.
For use with variable cooling coil in connection to the KS 3000 ic control. Includes 1 x Basic Fixing Clips and 12 x Fasteners.



Ident. No.
8022200

AS 1.401

Length 417 mm

AS 1.401
Spare for use with AS 4000.1.



Ident. No.
3712000

AS 1.402

2

Ident. No.
3712300

AS 1.402
Spare for use with AS 4000.1. Two required for the corresponding AS 4000.1.



AS 4000.2

Dimensions (W x D x H) 470 x 444 x 25 mm
Number of fixing clips (volume)
50 x AS 2.1 (25 ml)
48 x AS 2.2 (50 ml)
25 x AS 2.3 (100 ml)
16 x AS 2.4 (250 ml)
12 x AS 2.5 (500 ml)
7 x AS 2.6 (1000 ml)

AS 4000.2
For shaking bottles with fixing clips)



Ident. No.
3710100

Set-up plate 430 x 430 mm
Weight 2650 g

AS 4000.3

Dimensions (W x D x H) 470 x 444 x 25 mm
Set-up plate 430 x 430 mm
Weight 800 g

AS 4000.3
For smooth viscosity range media in PE vessels with integrated



Ident. No.
3710000

AS 1.400

Dimensions (W x D x H) 446 x 447 x 135 mm

AS 1.400
Spare for use with AS 4000.1



Available
Q2/2013



Roller basic | digital

Technical data	
Type of movement	rocking and rolling
Shaking diameter	24.5 mm (high)
Permissible shaking weight (incl. attachment)	2 kg
Motor rating input / output	16 / 9 W
Permissible ON time	100%
Speed range	30 rpm (fixed) 0 – 80 rpm
Speed display	none 7 segment LED
Timer	no ∞ / 1 s – 99.9 h
Timer display	none 7 segment LED
Operating mode	continuous operation timer and continuous operation
Dimensions (W x D x H)	380 x 545 x 115 mm
Weight	6 kg
Permissible ambient temp.	4 – 50 °C
Permissible relative moisture	80%
Protection class acc. to DIN EN 60529	IP 21
Interface	no
Voltage	100 – 240 V
Frequency	50/60 Hz
DC Voltage	24 V
Price	985,- EUR 1085,- EUR

Roller basic: Ident. No. 4015000
Roller digital: Ident. No. 4016000

Available
Q1/2013

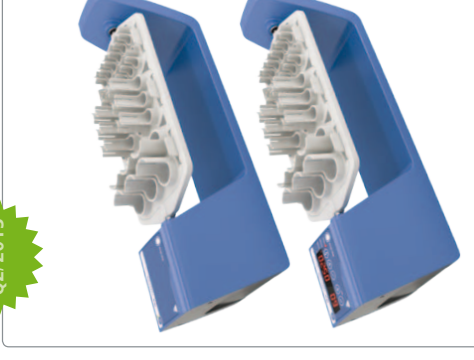


Roller 6 basic | digital

Technical data	
Type of movement	rocking and rolling
Shaking diameter	24.5 mm (high)
Permissible shaking weight (incl. attachment)	2 kg
Motor rating input / output	16 / 9 W
Permissible ON time	100%
Speed range	30 rpm (fixed) 0 – 80 rpm
Speed display	none 7 segment LED
Timer	no ∞ / 1 s – 99.9 h
Timer display	none 7 segment LED
Operating mode	continuous operation timer and continuous operation
Dimensions (W x D x H)	240 x 545 x 115 mm
Weight	4 kg
Permissible ambient temp.	4 – 50 °C
Permissible relative moisture	80%
Protection class acc. to DIN EN 60529	IP 21
Interface	no
Voltage	100 – 240 V
Frequency	50/60 Hz
DC Voltage	24 V
Price	795,- EUR 895,- EUR

Roller 6 basic: Ident. No. 4010000
Roller 6 digital: Ident. No. 4011000

Available
Q2/2013



Trayster basic | digital

Technical data	
Type of movement	rotating
Shaking diameter	vertical or horizontal
Permissible shaking weight (incl. attachment)	2 kg
Motor rating input / output	16 / 9 W
Permissible ON time	100%
Speed range	20 rpm (fixed) 0 – 80 rpm
Speed display	none 7 segment LED
Timer	no ∞ / 1 s – 99.9 h
Timer display	none 7 segment LED
Operating mode	continuous operation timer and continuous operation
Dimensions (W x D x H)	460 x 160 x 150 mm
Weight	1.7 kg
Permissible ambient temp.	4 – 50 °C
Permissible relative moisture	80%
Protection class acc. to DIN EN 60529	IP 21
Interface	no
Voltage	100 – 240 V
Frequency	50/60 Hz
DC Voltage	24 V
Price	359,- EUR 495,- EUR

Trayster basic: Ident. No. 4005000
Trayster digital: Ident. No. 4006000

Available
Q1/2013



Roller 10 basic | digital

Technical data	
Type of movement	rocking and rolling
Shaking diameter	24.5 mm (high)
Permissible shaking weight (incl. attachment)	2 kg
Motor rating input / output	16 / 9 W
Permissible ON time	100%
Speed range	30 rpm (fixed) 0 – 80 rpm
Speed display	none 7 segment LED
Timer	no ∞ / 1 s – 99.9 h
Timer display	none 7 segment LED
Operating mode	continuous operation timer and continuous operation
Dimensions (W x D x H)	380 x 545 x 115 mm
Weight	6 kg
Permissible ambient temp.	4 – 50 °C
Permissible relative moisture	80%
Protection class acc. to DIN EN 60529	IP 21
Interface	no
Voltage	100 – 240 V
Frequency	50/60 Hz
DC Voltage	24 V
Price	985,- EUR 1085,- EUR

Roller 10 basic: Ident. No. 4012000
Roller 10 digital: Ident. No. 4013000

Technical data	
Type of movement	rocking and rolling
Shaking diameter	24.5 mm (high)
Permissible shaking weight (incl. attachment)	2 kg
Motor rating input / output	16 / 9 W
Permissible ON time	100%
Speed range	30 rpm (fixed) 0 – 80 rpm
Speed display	none 7 segment LED
Timer	no ∞ / 1 s – 99.9 h
Timer display	none 7 segment LED
Operating mode	continuous operation timer and continuous operation
Dimensions (W x D x H)	380 x 545 x 115 mm
Weight	6 kg
Permissible ambient temp.	4 – 50 °C
Permissible relative moisture	80%
Protection class acc. to DIN EN 60529	IP 21
Interface	no
Voltage	100 – 240 V
Frequency	50/60 Hz
DC Voltage	24 V
Price	985,- EUR 1085,- EUR



VORTEX Genius 3

Type of movement	orbital
Shaking diameter	3 mm
Permissible shaking weight (incl. attachment)	2 or 4 mic
Motor rating input / output	35 / 13.2 W
Permissible ON time	100%
Speed range	0 – 1100 rpm
Speed display	scale 0 – 6
Timer	no
Timer display	none
Operating mode	continuous / touch operation
Dimensions (W x D x H)	27 x 149 x 136 mm
Weight	2.7 kg
Permissible ambient temp.	-40 °C
Permissible relative moisture	0%
Protection class acc. to DIN EN 60529	IP 21
Interface	no
Voltage	230 V
Frequency	50/60 Hz

01,- EUR

Ident. No. 3340000



VORTEX 1

Type of movement	orbital
Shaking diameter	4.5 mm
Permissible shaking weight (incl. attachment)	0.1 kg
Motor rating input / output	1.2 / 0.8 W
Permissible ON time	100%
Speed range	1000 – 2800 rpm
Speed display	none
Timer	no
Timer display	none
Operating mode	touch operation
Dimensions (W x D x H)	95 x 110 x 70 mm
Weight	0.55 kg
Permissible ambient temp.	5 – 40 °C
Permissible relative moisture	80%
Protection class acc. to DIN EN 60529	IP 40
Interface	no
Voltage	100 – 240 V
Frequency	50/60 Hz

217,- EUR

Ident. No. 4047700



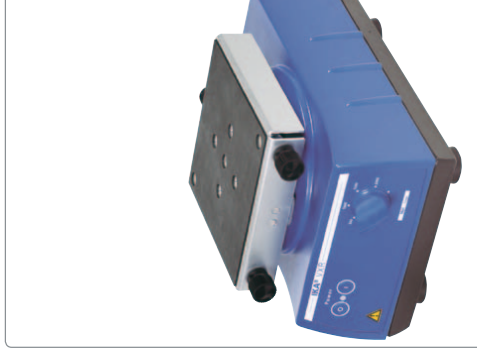
VORTEX 4 basic | digital

Type of movement	orbital
Shaking diameter	4.5 mm
Permissible shaking weight (incl. attachment)	0.5 kg
Motor rating input / output	10 / 8 W
Permissible ON time	100%
Speed range	0 – 3000 rpm
Speed display	scale
Timer	no
Timer display	scale 7 segment LED
Operating mode	continuous / touch operation timer and continuous / touch operation
Dimensions (W x D x H)	176 x 190 x 63 mm
Weight	3 kg
Permissible ambient temp.	5 – 40 °C
Permissible relative moisture	80%
Protection class acc. to DIN EN 60529	IP 21
Interface	no
Voltage	100 – 240 V
Frequency	50/60 Hz

295,- EUR | 359,- EUR

VORTEX 4 basic: Ident. No. 4049600

VORTEX 4 digital: Ident. No. 4050100



VXR basic Vibrax®

Type of movement	orbital
Shaking diameter	4 mm
Permissible shaking weight (incl. attachment)	2 kg
Motor rating input / output	35 / 13.2 W
Permissible ON time	100%
Speed range	0 – 2200 rpm
Speed display	scale
Timer	no
Timer display	none
Operating mode	continuous operation
Dimensions (W x D x H)	157 x 247 x 130 mm
Weight	6.1 kg
Permissible ambient temp.	5 – 40 °C
Permissible relative moisture	80%
Protection class acc. to DIN EN 60529	IP 21
Interface	no
Voltage	230 V
Frequency	50/60 Hz

1060,- EUR

Ident. No. 2819000



MTS 2

Type of movement	orbital
Shaking diameter	3 mm
Permissible shaking weight (incl. attachment)	2 or 4 mic
Motor rating input / output	35 / 13.2 W
Permissible ON time	100%
Speed range	0 – 1100 rpm
Speed display	scale
Timer	∞ / 1 – 9
Timer display	digital
Operating mode	timer and continuous operation
Dimensions (W x D x H)	185 x 320 x 130 mm
Weight	2.7 kg
Permissible ambient temp.	5 – 40 °C
Permissible relative moisture	80%
Protection class acc. to DIN EN 60529	IP 21
Interface	no
Voltage	230 V
Frequency	50/60 Hz

1133,- I

Ident. No. 1133000



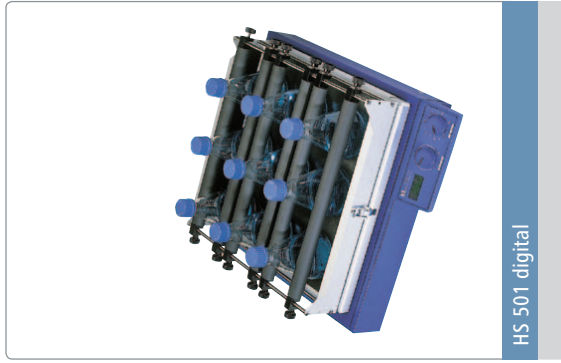
HS 501 digital

Reciprocating	no
Amplitude	20 mm
Weight	7.5 kg
Power	45 / 10 W
Speed	100%
Speed range	20 – 300 rpm 10 – 300 rpm
LED line	LED line digital
LED line	∞ / 5 – 50 min ∞ / 0 – 9 h 59 min
LED line	LED line digital
timer and continuous operation	timer and continuous operation
Dimensions (W x D x H)	360 x 420 x 100 mm
Weight	8.5 kg 8.8 kg
Temperature range	5 – 50 °C
Humidity	80%
Protection class	IP 21
Control	no RS 232
Voltage	230 V
Frequency	50/60 Hz
Price	7,- EUR
Ident. No.	No. 2526400



HS 260 basic | control

Reciprocating	no
Amplitude	20 mm
Weight	7.5 kg
Power	45 / 10 W
Speed	100%
Speed range	20 – 300 rpm 10 – 300 rpm
LED line	LED line digital
LED line	∞ / 5 – 50 min ∞ / 0 – 9 h 59 min
LED line	LED line digital
timer and continuous operation	timer and continuous operation
Dimensions (W x D x H)	360 x 420 x 100 mm
Weight	8.5 kg 8.8 kg
Temperature range	5 – 50 °C
Humidity	80%
Protection class	IP 21
Control	no RS 232
Voltage	230 V
Frequency	50/60 Hz
Price	1772,- EUR 2312,- EUR
Ident. No.	HS 260 basic: Ident. No. 3066600
Ident. No.	HS 260 control: Ident. No. 3066700



HS 501 digital

Reciprocating	no
Amplitude	30 mm
Weight	15 kg
Power	70 / 19 W
Speed	100%
Speed range	0 – 300 rpm
LED line	digital
LED line	∞ / 1 – 56 min
LED line	digital
timer and continuous operation	timer and continuous operation
Dimensions (W x D x H)	505 x 585 x 120 mm
Weight	26 kg
Temperature range	5 – 50 °C
Humidity	80%
Protection class	IP 21
Control	no
Voltage	230 V
Frequency	50/60 Hz
Price	3467,- EUR
Ident. No.	Ident. No. 2527000

AS 130.1	
Dimensions (W x D x H)	325 x 234 x 88 mm
Set-up plate	220 x 220 mm
Weight	850 g



Ident. No. 8017300

AS 130.1 Universal attachment

For use with various types of vessels by means of universal, infinitely variable clamping rolls.

Included with delivery:

- 1 x AS 1.30 Basic holder
- 3 x AS 1.31 Clamping roll
- 6 x AS 1.5 Fastening screw

AS 130.2	
Dimensions (W x D x H)	
Number of fixing clips (volu)	

Weight

Ident. No. 3115000

AS 130.2 Fixing clip at

For processing round flasks. Please use Erlenmeyer flasks. Please use Erlenmeyer flasks. Please use Erlenmeyer flasks.

Accessories:

Fixing clips: AS 2.1, AS 2.2

AS 130.3	
Dimensions (W x D x H)	420 x 270 x 32 mm
Set-up plate	220 x 340 mm
Weight	370 g



Ident. No. 3120000

AS 130.3 Dish attachment

For smooth shaking operations in the low viscosity range, e.g. Petri dishes or culture bottles. With integrated slip-resistant foil (PP).

AS 130.4	
Dimensions (W x D x H)	
Capacity	
Vessel Ø	
Min. height of vessel	
Min. height of vessel	

Ident. No. 3120300

AS 130.4 Test tube attachment

For intensive shaking, e.g. test tubes, cuvettes, centrifuge tubes.



VX 11.1

Bore holes (number) 70
 Hole Ø 10 mm



Ident. No.
 3659000

VX 11.1 Test tube insert

Attachment for Eppendorf tubes or test tubes.

VX 11.2

Bore holes (number) 41
 Hole Ø 12 mm



Ident. No.
 3659100

VX 11.2 Test tube insert

Attachment for test tubes.

VX 11.3

Bore holes (number) 32
 Hole Ø 16 mm



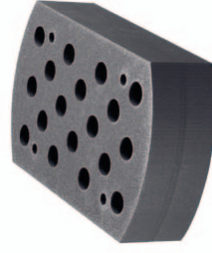
Ident. No.
 3659200

VX 11.3 Test tube insert

Attachment for test tubes.

VX 11.4

Bore holes (number) 18
 Hole Ø 20 mm



Ident. No.
 3659300

VX 11.4 Test tube insert

Attachment for test tubes.

VX 1

Dimensions (W x D x H) 130 x 135 x 40 mm
 Weight 160 g



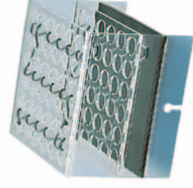
Ident. No.
 0607200

VX 1 One-hand attachment

For shaking single, non-fixed vessels of 1 – 250 ml.

VX 2

Dimensions (W x D x H) 140 x 145 x 115 mm
 Material macrolon
 Weight 300 g



Ident. No.
 0568900

VX 2 Test tube attachment

For up to 36 test tubes or centrifugal tubes with a diameter of 16 mm.

VX 2 E

Dimensions (W x D x H) 210 x 210 x 65 mm
 Weight 790 g



Ident. No.
 1618100

VX 7

Dimensions (W x D x H)
 Weight

Ident. No.
 0953300

VX 7 Dish attachment

For careful mixing of cult.

VX 8

Dimensions (W x D x H)
 Clamping range
 Min. height of vessel
 Weight

Ident. No.
 0910400

VX 8 Universal attachment

For rapid and secure clamp flasks up to 500 ml.

Ident. No.
 3375400

VX 8.1 Clamping roll

Spare for use with VX 8

VX 11

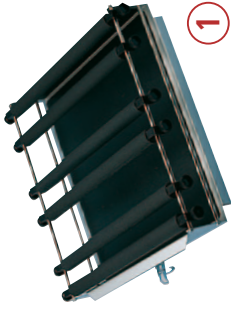
Dimensions (W x D x H)
 Capacity
 Vessel Ø
 Min. height of vessel
 Weight

Ident. No.
 3627700

1



AS 501.1
 450 x 500 x 120 mm
 420 x 420 mm
 4000 g



1

Ident. No.
 8000200

AS 501.5

Dimensions (W x D x H)
 450 x 450 x 45 mm
 Set-up plate
 420 x 420 mm
 Weight
 1120 g



Ident. No.
 2339600

AS 501.5 Dish
 For smoothly shaking
 smooth mixing
 bottom (wide-neck
 beakers). A plate
 prevents the vessels

AS 501.2
 480 x 505 x 190 mm
 12 x 50 ml
 10 x 100 ml
 6 x 250 ml
 4180 g



Ident. No.
 8000300

AS 501.2 Separating funnel attachment

For shaking out, eluting, extracting, gassing out,
 dissolving, enriching, etc. Adjustment for the
 clamping rolls is infinitely variable, the set-up
 height can be changed by means of clamping
 devices.

Included with delivery:

1 x AS 1.10, 6 x AS 1.11, 6 x AS 1.6, 6 x AS 1.7

AS 501.6 Separator
 Same features as AS 501.5
 will hold 4 x 100 ml
 Included with delivery:
 1 x AS 1.10, 4 x AS 1.11, 4 x AS 1.6, 4 x AS 1.7



Ident. No.
 8000500

AS 501.3
 480 x 505 x 190 mm
 4 x 500 ml
 3 x 1000 ml
 2 x 2000 ml
 3720 g



Ident. No.
 8000400

AS 501.3 Separating funnel attachment

Same features as AS 501.2.

Included with delivery:

1 x AS 1.10, 4 x AS 1.11, 4 x AS 1.6, 4 x AS 1.7

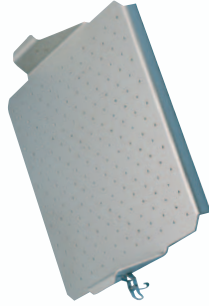
STICKMAX

Dimensions (W x D x H)
 200 x 200 mm
 Permissible ambient temperature
 5 – 80 °C
 Max. speed
 300 rpm
 Number of adhesive mats per shaker
 KS 130 1 pcs.
 KS/HS 260 3 pcs.
 KS/HS 501 4 pcs.
 KS 4000 i 4 pcs.



STICKMAX
 New universal attachment
 of KS 4000 i and
 KS 4000 i s
 - Ideal for frequent
 and sizes
 - Self-adhesive
 - Devices can be
 movement
 - Suitable for dis-
 - Peel-away stre-

AS 501.4
 75 x 460 x 95 mm
 AS 2.1 (25 ml)
 AS 2.2 (50 ml)
 AS 2.3 (100 ml)
 AS 2.4 (250 ml)
 AS 2.5 (500 ml)
 AS 2.6 (1000 ml)
 2640 g



Ident. No.
 2341100

AS 501.4 Fixing clip attachment

For shaking flasks, Erlenmeyer flasks and
 pear-shaped flasks (without fixing clips).

Accessories:

Fixing clips : AS 2.1, AS 2.2, AS 2.3,
 AS 2.4, AS 2.5



1

Ident. No.
 3920000

AS 260.1	
Dimensions (W x D x H)	425 x 335 x 135 mm
Set-up plate	320 x 320 mm
Weight	1600 g



Ident. No.
8017400

AS 260.1 Universal attachment

For various types of vessels. Infinitely variable clamping rolls allow universal adaptation to the vessels.

Included with delivery:

- 1 x AS 1.60 Basic holder,
- 4 x AS 1.61 Clamping roll,
- 8 x AS 1.5 Fastening screw

AS 260.2	
Dimensions (W x D x H)	330 x 330 x 24 mm
Number of fixing clips (volume)	56 x AS 2.1 (25 ml) 23 x AS 2.2 (50 ml) 23 x AS 2.3 (100 ml) 11 x AS 2.4 (250 ml) 9 x AS 2.5 (500 ml) 5 x AS 2.6 (1000 ml)
Weight	1290 g



Ident. No.
3115500

AS 260.2 Fixing clip attachment

For shaking flasks, Erlenmeyer flasks and bottles with a round cross-section (without fixing clips).

Accessories:

Fixing clips: AS 2.1, AS 2.2, AS 2.3, AS 2.4, AS 2.5

AS 260.3	
Dimensions (W x D x H)	410 x 370 x 32 mm
Set-up plate	320 x 320 mm
Weight	460 g



Ident. No.
3120600

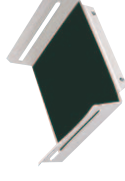
AS 260.3 Dish attachment

For smooth movement for cell cultures, nutrient media in Petri dishes, culture bottles and vessels with a low center of gravity. With integrated slip-resistant foil (PP).

AS 1.30	
Dimensions (W x D x H)	252 x 234 x 88 mm

AS 1.30
For use v
Accessor
AS 1.31,

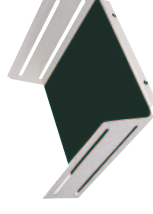
Ident. No.
3148000



AS 1.60	
Dimensions (W x D x H)	348 x 335 x 135 mm

AS 1.60
For use v
Accessor
AS 1.61,

Ident. No.
3149000



AS 1.10	
Dimensions (W x D x H)	480 x 480 x 120 mm

AS 1.10
For use v
and sepa
AS 501.3
Accessor
AS 1.11,

Ident. No.
2339700



AS 1.31	
For basic holder	AS 1.30
Length	228 mm

Clampir
AS 1.31
AS 1.61
AS 1.11

Ident. No.
3030500
3030501
2339800



AS 1.61	
For basic holder	AS 1.60
Length	335 mm

AS 1.11

AS 260.5 Separating funnel attachment

For shaking out, salting out, extracting, eluting and enriching. The 3 clamping rolls (included in delivery) are height-adjustable for adaption to different separating funnel sizes. The separating funnels are secured with O-rings (6 O-rings included).



Ident. No.
3120900



lamping device

6 and two AS 1.7 clamping devices are for fastening two clamping rolls one : other (for clamping separating funnels), holder AS 1.10 only.

upporting clamping device

6 clamping devices and two AS 1.8 g clamping devices are required if a roll is to be attached at a higher position ixing a vessel which has a higher point of :or basic holder AS 1.10 only.

Ground section holder

ing separating funnels with ground NS 29 (2 x AS 1.13 necessary per separating or basic holder AS 1.10 only.

VG 3.31 Test tube attachment*

For 54 Eppendorf tubes (continuous operation).



Ident. No.
3344300

VG 3.32 Test tube attachment*

For 18 reagent glasses, 10 mm (continuous operation).



Ident. No.
3343900

VG 3.33 Test tube attachment*

For 12 reagent glasses, 12 mm (continuous operation).



Ident. No.
3344000

VG 3.2 One-hand attachment

One-hand attachment, 88 mm, round, with rubber insert (continuous / touch operation).

1



Ident. No.
3342300

VG 3.3 Universal attachment

Universal attachment, 150 mm, with rubber insert (continuous operation).



Ident. No.
3342400

VG 3.34 Test tube attachment*

For 8 reagent glasses, 16 mm (continuous operation).



Ident. No.
3344100

VG 3.35 Test tube attachment*

For 8 reagent glasses, 20 mm (continuous operation).



Ident. No.
3344200

VG 3.36 Erlenmeyer flask attachment*

For 1 Erlenmeyer / round flask from 100 to 250 ml (continuous operation).



Ident. No.
3342100

VG 3.37 Microtiter plate attachment*

For 1 standard microtiter plate (continuous operation).



Ident. No.
3344400

MS 3.1 Standard attachment

For test tubes and small vessels up to Ø 5 included with the minishakers MS 3 basic MS 3 digital.



Ident. No.
3426300

MS 3.3 Universal attachment

For various foam inserts, included with the minishakers MS 3 basic and MS 3 digital.



Ident. No.
3426600

MS 3.4 Microtiter plate attachment

For use with a microtiter plate, included with the minishaker MS 3 digital.



Ident. No.
3426400

MS 3.5 PCR plate attachment

For holding PCR plates, 96-well.



Ident. No.
3428000

- AS 2.1 Fixing clip
- AS 2.2 Fixing clip
- AS 2.3 Fixing clip
- AS 2.4 Fixing clip
- AS 2.5 Fixing clip
- AS 2.6 Fixing clip



	1000 ml	2000 ml	3000 ml	5000 ml
1	1**	0		
1	1**	0		
2	2	0		
1	0	0		
5	2	1		
3	1	1		
3	2	2 (4)		
5	4	0		
9	5	1	1	
9	4	4	1	
6	3	3	2	
8	5	0	0	
9	4	1	0	
8	4	2	0	
4	4	2	0	
7	4	0	0	



	800 ml	1000 ml	2000 ml	3000 ml
4	4*	1*	1*	1*
2	2	1*	1*	
2	2	2	2	
9	9	4*	4*	
6	6	2	2	
3	3	2	2	
16	9	9	4	
12	12	12	4	
4	4	3	4	
16	9	9	4	

Volumetric Flasks										
IKA® Shaker	Attachment Combination	25 ml	50 ml	100 ml	200 ml	250 ml	500 ml	1000 ml	5000 ml	20000 ml
KS 130	Stickmax	25	16	9	5	5	2	1**		**
KS 130	AS 130.1	16	12	6	3	2	2	0	0	0
KS 130	required clamping rolls for AS 130.1	5	4	3	3	2	2	0	0	0
KS 130	AS 130.2	15	8	8	4	4	4	1	0	0
KS 260	Stickmax	49	36	25	10	10	9	4		**
KS 260	AS 260.1 max. quantity	32	24	20	12	16	6	2		**
KS 260	required clamping rolls for AS 230.1	5	5	7	6	6	4	2		**
KS 260	AS 260.2	30	29	23	9	9	8	4		3
KS 501	Stickmax	100	64	36	20	16	9	20		**
KS 501	AS 501.1 + 10 AS 1.11 Clamping Roll + 20 AS 1.6 Fastening Screw	70	56	30	25	20	12	6		**
KS 501	required clamping rolls for AS 501.1	8	14	10	6	5	6	4		**
KS 501	AS 501.2	55	50	35	20	20	11	8		5
KS 4000	Stickmax	100	64	36	20	20	16	6*		0
KS 4000	AS 4000.1	70	40	24	20	20	12	6		0
KS 4000	required clamping rolls for AS 4000.1	8	6	5	8	8	6	4		0
KS 4000	AS 4000.2	52	49	30	19	19	11	6		0

Comprehensive Worldwi

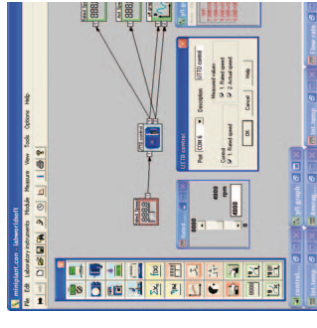


Beakers (low form)														
IKA® Shaker	Attachment Combination	25 ml	50 ml	100 ml	150 ml	250 ml	400 ml	600 ml	800 ml	1000 ml	2000 ml	3000 ml	5000 ml	10000 ml
KS 130	Stickmax	25	16	9	9	5	4	4	4	2	1	1*	1*	**
KS 130	AS 130.1 max. quantity	15	8	8	8	4	2	2	2	2	2	1*	0	**
KS 130	required clamping rolls for AS 130.1	4	3	3	3	3	2	2	2	2	2	2		
KS 260	Stickmax	64	36	25	16	10	9	9	6	6	4	2	1	1*
KS 260	AS 260.1 max. quantity	32	24	15	12	8	6	6	6	2	2	2	1	1*
KS 260	required clamping rolls for AS 230.1	5	5	4	4	3	3	3	3	2	2	2	2	2
KS 501	Stickmax	100	64	49	36	25	16	16	10	9	9	4	4	1
KS 501	AS 501.1 max. quantity	70	48	42	30	20	16	12	9	9	6	4	1	1
KS 501	required clamping rolls for AS 501.1	8	7	6	5	4	4	3	3	3	3	3	2	2
KS 4000	Stickmax	100	64	49	36	25	16	16	10	9	9	4	4	1*

Integrated Safety



labworldsoft®



Operation	Diagram	Shaking diameter	Max. Permissible shaking weight	Speed range	Recommended IKA® device	Applications
cup generates a whirlpool' vortex action	 A	4.5 mm 4.5 mm 4.5 mm 4.5 mm 4 mm 4.5 mm 4.5 mm	0.5 kg 0.5 kg max. 50 ml (1 test tube) 0.1 kg 0.4 kg 0.5 kg 0.5 kg	0 – 3000 rpm 0 – 3000 rpm 2800 rpm (fixed) 1000 – 2800 rpm 500 – 2500 rpm 0 – 3000 rpm 0 – 3000 rpm	MS 3 basic MS 3 digital lab dancer VORTEX 1 VORTEX Genius 3 VORTEX 4 basic VORTEX 4 digital	Suitable for shaking small vessels and microtiter plates Ideal for use with all small vessels of up to 30 mm in diameter centrifuge tubes and microcentrifuge tubes Suitable for mixing in test tubes, microcentrifuge tubes, reaction Erlenmeyer/round flask and microtiter plates
platform moves in a circular orbit	 B	20 mm 20 mm 20 mm 20 mm 4 mm 3 mm 4 mm 4 mm 10 mm 10 mm 30 mm	20 kg 20 kg 7.5 kg 7.5 kg 2 kg 2 or 4 microtiter plates 2 kg 2 kg 7.5 kg 7.5 kg 15 kg	10 – 500 rpm 10 – 500 rpm 10 – 500 rpm 10 – 500 rpm 10 – 500 rpm 0 – 2200 rpm 0 – 1100 rpm 80 – 800 rpm 80 – 800 rpm 20 – 500 rpm 10 – 500 rpm 0 – 300 rpm	KS 4000 i control KS 4000 ic control KS 3000 i control KS 3000 ic control VXR basic Vibrax® MTS 2/4 digital microtiter shaker KS 130 basic KS 130 control KS 260 basic KS 260 control KS 501 digital	Ideal for unattended operation in a temperature-controlled environment Ideal for mixing in test tubes, microtiter plates, bottles, flasks of attachment combinations allows for using almost all shapes Ideal for shaking out, eluting, extracting, gassing out, dissolving
platform moves back and forth horizontally	 C	20 mm 20 mm 30 mm	7.5 kg 7.5 kg 15 kg	20 – 300 rpm 10 – 300 rpm 0 – 300 rpm	HS 260 basic HS 260 control HS 501 digital	Used for homogenous mixing in flasks, culture flasks, Petri dishes
platform rocks on a vertical pivot	 D	8° (angle) 0 – 15° (angle)	2 kg 2 kg	5 – 80 rpm 0 – 80 rpm	Rocker 2D basic Rocker 2D digital	Ideal for low foaming agitation, DNA extractions, staining and
platform moves in a three-dimensional motion	 E	8° (angle) 0 – 15° (angle)	2 kg 2 kg	30 rpm (fixed) 0 – 80 rpm	Rocker 3D basic Rocker 3D digital	Recommended for mixing blood samples, viscous substances where minimum aeration is required
platform rocks on a vertical pivot as well as revolves around a fixed point	 F	24.5 mm (high) 24.5 mm (high) 24.5 mm (high) 24.5 mm (high)	2 kg 2 kg 2 kg 2 kg	30 rpm (fixed) 0 – 80 rpm 30 rpm (fixed) 0 – 80 rpm	Roller 6 basic Roller 6 digital Roller 10 basic Roller 10 digital	
platform revolves at a fixed angle	 G	adjustable from horizontal to vertical adjustable from horizontal to vertical vertical or horizontal vertical or horizontal	2 kg 2 kg 2 kg 2 kg	20 rpm (fixed) 0 – 80 rpm 20 rpm (fixed) 0 – 80 rpm	Loopster basic Loopster digital Trayster basic Trayster digital	Ideal for keeping biological samples in suspension and for gentle

Prices valid until 31st of December 2013
All prices exclusive to VAT
Subject to alteration of prices

IKA®+

Ordering made easy!

For more information about our products and to place your order, please visit:

www.ika.com

201206_shakers_brochure_EN

Shakers | FAQ

Is it possible to operate using IKA® laboratory software?

labworldsoft® is an advanced software for all your laboratory needs. With the help of this software, you can network up to 64 laboratory devices via one PC. All test parameters can be documented ensuring complete automation of your laboratory experiments. Measurements and processes may be run independently. Long waits and processing times are reduced, which increases productivity.

Can I place my shaker in a CO₂ chamber or in an incubator?

If the relative humidity does not exceed 80% and the temperature stays within 5 – 40 °C (partially until 50°C), the shaker can be used in a CO₂ chamber or an incubator.

Which IKA® shaker of the HS/KS series starts automatically after a power failure?

KS 130, KS 260, KS 3000 and KS 4000 start automatically in certain modes (C, C+B) after a power failure.

What kind of vortex shakers does IKA® offer?

(They should have a touch function, but also come equipped with various attachments, e.g. for microtiter plates) The Lab Dancer, MS 3 basic, digital VORTEX 4 and VORTEX Genius 3 are the appropriate devices. MS 3 basic, digital and VORTEX Genius 3 have a variety of attachments for most variable shaking tasks.

Is it possible to shake deepwell plates with the MTS 2/4?

No, deepwell plates cannot be fixed properly; their center of gravity is simply too high.

IKA®-Werke GmbH & Co. KG
Janke & Kunkel-Str. 10
79219 Staufen
Germany

Tel. +49 7633 831-0
Fax +49 7633 831-98

sales@ika.de
www.ika.com